



EXCEL INNOVATIONS
Pvt. Ltd.



Excel Innovations Private Limited, A leading manufacturer and service providers of Solar Water Heating System for the past 11 years and an EPC (Engg., procurement & contract) company for solar Photovoltaic for last two years. The company was started by our dynamic managing Director, Mr. D Sarkar, whose vision was to make the country energy self sufficient by replacing fossil fuel with renewable energies sources. The focus of the company towards Solar energy was driven by this vision.





SOLAR

WATER HEATING SYSTEMS (DOMESTIC)

Features of PolyZol Geysers

- First "BIO-Bath" system in India
- First "Design Patented System"
- Four Star rating by SRIAC for 40% higher energy efficiency.

Radiating uncontaminated futures

- Shrink Nil HCFC free PUFF insulation
- Models to suit different water qualities
- Ss304 tank with SS308TIG welded ultra formed tank
- MagAL Sacrificial Anode for protection from galvanic corrosion
- Increased energy collection under cloudy conditions





SOLAR

WATER HEATING SYSTEMS (DOMESTIC)

Model Details

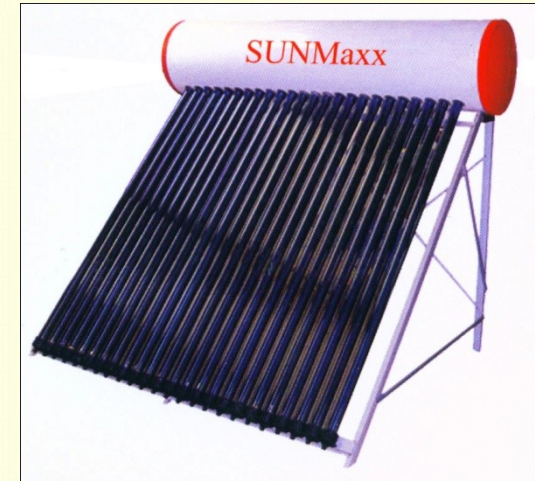
Features of PlyZol Series	Plus	Premium	Scaleguard	Prezzol
	Atmospheric	Atmospheric	Atmospheric	A. Upto 2.5 Kg/cm2 B. Upto 4.0 Kg/cm2
Operating Pressure	Upto 140 ppm	Upto 140 ppm	Upto 500 ppm	Upto 140 ppm
Water Hardness Chloride Protection AirVent Electrical backup-ZDZ	----- Required 2KW, 230V AC, with Thermostatic Control	Propvided Required 2KW, 230V AC, with Thermostatic Control	Propvided Required 2KW, 230V AC, with Thermostatic Control	Propvided HAVAR VALVE 2KW, 230V AC, with Thermostatic Control
Output	A. 125 LPD B. 250 LPD C. 375 LPD	A. 125 LPD B. 250 LPD C. 375 LPD	A. 100 LPD B. 200 LPD C. 300 LPD	A. 125 LPD B. 250 LPD C. 375 LPD



SOLAR

WATER HEATING SYSTEMS (DOMESTIC) ETC

How is SUNMaxx different ?1



Features

IMAX
absorbivity
Emmissivity
Glass Type
Incident angle of Absorption
Coating
Vacuum Insulation
End Sealing
Connection
Increase in Temperature
Material

ETC

2.0
>0.95
0.10
Borosilicate
270°
Azzuro Selective
10* Atmosphere
Silicone Rubber
Glass Tube
Delta T 50°
Copper Coating

FPC

Not Applicable
>0.92
<0.14
Toughened Glass
180°
Black Chrome
No Vacuum
EPDM
Hose Connection
Delta T 40°
Copper Metal



SOLAR

WATER HEATING SYSTEMS (INDUSTRIAL)

Features

- Custom designed systems, any capacity from 1000LPD to 1,00,000LPD
- Applications like hotels, hospitals, apartments, hostels, marriage houses, canteens, dormitories, boiler feed, paint shop, industrial washing, automobile service stations, etc.
- Temperatures up to 80° c (both thermosiphon and forced circulation systems)
- Heat EX™ jacketed heating systems for varying water quality
- Heating of water, chemicals, oil, thermic fluid, etc.
- Optional automatic back up system with LPG or electricity
- Turnkey design to suit modern architecture
- Modular integrated fourth generation thermal solutions



SOLAR

WATER HEATING SYSTEMS (INDUSTRIAL)

Fiscal Incentives

- Easy finance options from nationalized banks with interest subsidy
- 100% accelerated depreciation benefits for business establishments
- Incentives from state government, MNES supported incentives Return on investment
- Carbon Credits





SOLAR

WATER HEATING SYSTEMS (INDUSTRIAL)

Industrial Scope

- Boiler Pre Heating for Steam generation
- Pasteurization
- Centralized water heating system for Soft & Hard water application.
- Custom design for 24 Hrs. Application.



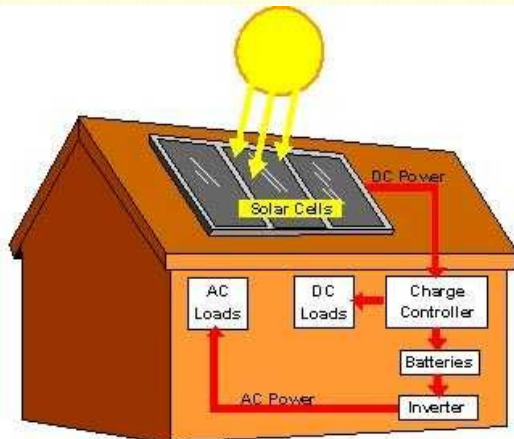


SOLAR

PHOTOVOLTAIC SYSTEMS

Solar Home Lighting Systems

- Ideal for homes, guesthouses, hospitals, canteens, schools, security rooms, checkposts, restaurants, warehouses, banks, etc.
- High luminance CFL lamps
- Easy to install and maintain
- Various models depending on number of lights and total back up.
- Models available with DC fan, FM/AM radio, B/W TV Approved by nationalised banks, MNES.UNEP & other nodal agencies





SOLAR

PHOTOVOLTAIC SYSTEMS

Solar Street Lights

- Auto dusk to dawn operation
- Innovative "SS" design for high aesthetics and wind resistance
- Super surface structure to withstand corrosion
- High efficiency F50 electronics for a long life
- Option for stand alone & centralized systems
- LED Solar street light for higher illumination & efficiency





SOLAR

PHOTOVOLTAIC SYSTEMS

Power Plants

- 1KW to any capacity
- Remote monitoring and data control
- For rural electrification, pumping, industrial lights, bungalows, etc.
- Grid connect option





SOLAR

PHOTOVOLTAIC SYSTEMS

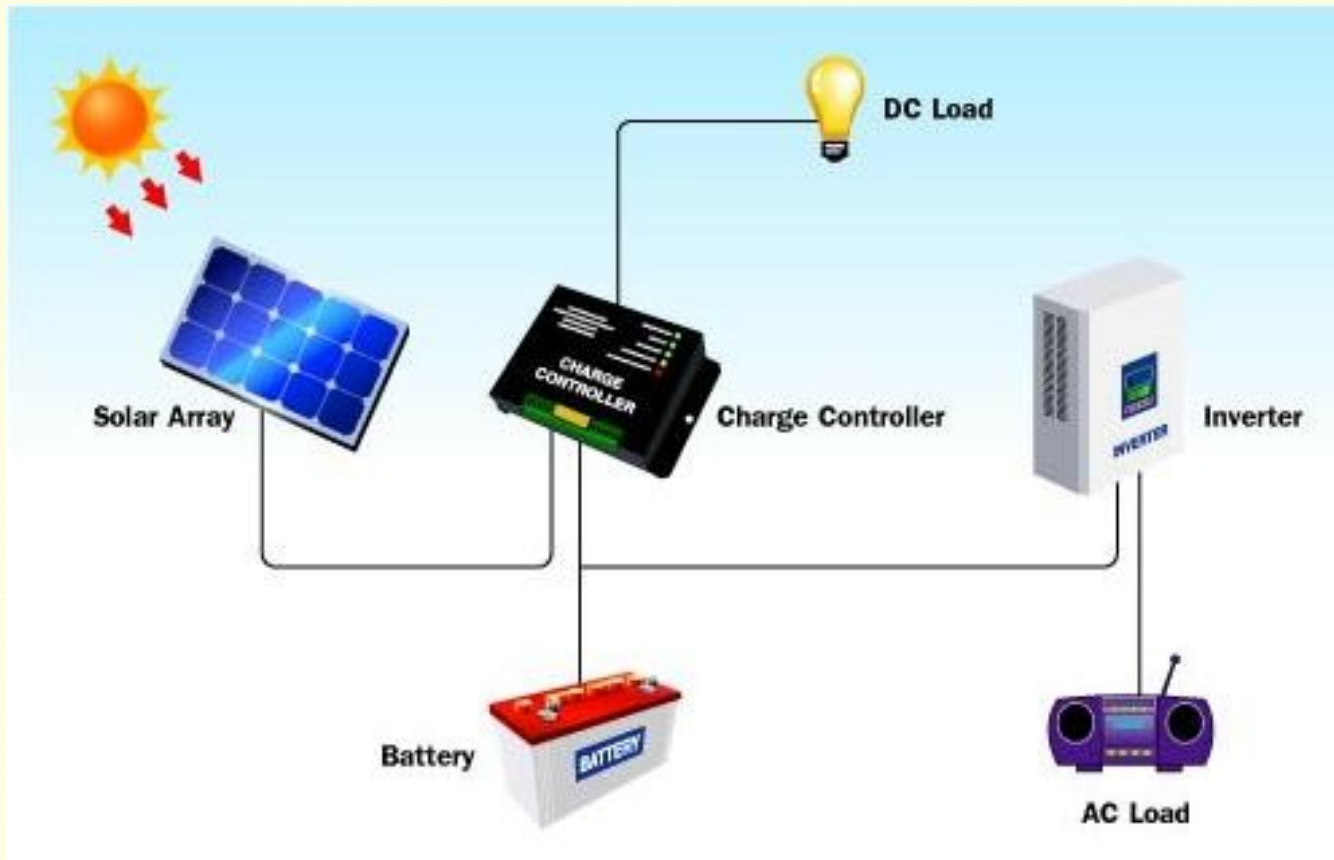
Solar Photovoltaic systems (power plant)

Solar cells produce direct current (DC), therefore they are only used for DC equipments. If alternating current (AC) is needed for AC equipments or backup energy is needed, **solar photovoltaic** systems require other components in addition to solar modules. These components are specially designed to integrate into **solar PV system**, that is to say they are **renewable energy** products or energy conservation products and one or more of components may be included depending on type of application. The components of **solar photovoltaic system** are

Solar Module is the essential component of any solar PV system that converts sunlight directly into DC electricity.



SOLAR PHOTOVOLTAIC SYSTEMS





SOLAR

PHOTOVOLTAIC SYSTEMS

Solar Charge Controller regulates voltage and current from solar arrays, charges the battery, prevents battery from overcharging and also performs controlled over discharges.

Battery stores current electricity that produces from solar arrays for using when sunlight is not visible, nighttime or other purposes.

Inverter is a critical component of any solar PV system that converts DC power output of solar arrays into AC for AC appliances.

Lightning protection prevents electrical equipments from damages caused by lightning or induction of high voltage surge. It is required for the large size and critical solar PV systems, which include the efficient grounding.



**EXCEL INNOVATIONS
Pvt. Ltd.**

Regd. Off. – B-42, Indra Heights, Hadapsar, Pune – 28.

Mrkt Off. : L-108, Mega Center, Pune solapur Rd., Hadapsar, Pune – 28.

Tel.: 020 – 30426528 Tel fax : 020 – 30426528

Email : excelinnovations@vsnl.net