

WORLD OF HONING..





High on Precision

Higher on Productivity

HIGH PRECISION HONING MACHINES

KHUSHBU GROUP of Companies has been considered a world leader in developing innovative honing and bore finishing technology and processes.

Khushbu provides innovative, precision honing solutions for an incredibly wide range of industries and applications. We produce the industry's large selection of honing machines horizontal or vertical, single or multi-spindle, automated or manual, standard or customized and our systems are designed with a focus on reliability, flexibility and ease of use.

We are dedicated to finding specialized solutions to our customers' specific application challenges.

- ◆ Two wheeler Transmission Gears
- ◆ Rocker Arm
- ◆ Gear Shifter Fork
- ◆ Fuel Injector Bodies
- ◆ Diesel Engine Blocks
- ◆ Marine Engine Blocks
- ◆ Automotive Engine Blocks
- ◆ Automotive Connecting Rods
- ◆ Aviation Landing Gear Struts
- ◆ Brake Drums/Cylinders
- ◆ Cam/Crank Bores
- ◆ C. V. Joints
- ◆ Mortar Tubes/Cannon Barrels
- ◆ Refrigeration Compressor Bodies
- ◆ Hydraulic Valve Blocks
- ◆ Two wheeler Starter Clutch
- ◆ Bearing Housing
- ◆ Diesel Engine Liners
- ◆ Bearing Components
- ◆ Small Engine Blocks
- ◆ Turbo charger Bodies
- ◆ Power Steering Pump Bodies
- ◆ Hydraulic Pump Barrels
- ◆ Hydraulic Cylinders
- ◆ Hydraulic Valve Sleeves
- ◆ Shifting Segment

WORLD OF **HONING..**



SINGLE PASS HONING MACHINE SP450 / SP650

SP 650 is a six spindle machine designed to meet the requirements of high production for components of bore dia up to 38 mm.

Standard Features

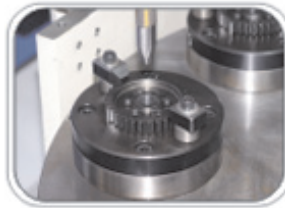
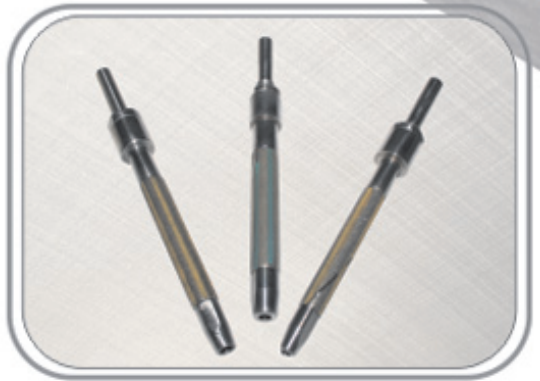
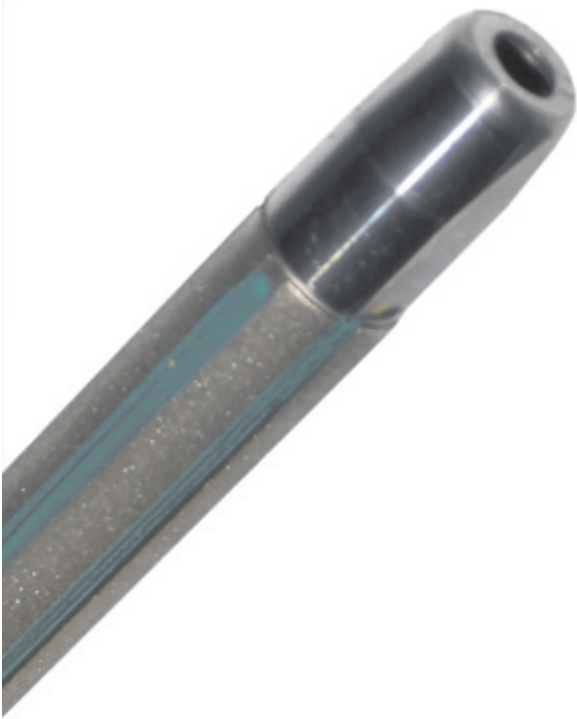
- ◆ CNC Servo controlled vertical axis.
- ◆ High Precision index table.
- ◆ Vertical stroke 450mm.
- ◆ Pneumatic cylinders with fine pressure regulator.
- ◆ Pre-lubed, P4 Class duplex spindle bearings.
- ◆ Tr36 tool holder with vertical, bidirectional float.

CNC VERTICAL HONING MACHINE

- ◆ The honing head slides on LM guide and ball screw.
- ◆ The sliding motion is shock less and smooth.
- ◆ Variable spindle speed and reciprocation speed.
- ◆ Hydraulic hone expansion.
- ◆ Number of Strokes for Roughing & finishing can be programmed in CNC/PLC.
- ◆ Tooled up machine.
- ◆ Very compact and optimally designed hydraulic system.



DIAMOND HONING TOOLS



CE



Our Valued Customers



Aurangabad Auto
Ancillary Pvt. Ltd.

The Dunes Oman Llc (Fzc)



WORLD OF **HONING..**

WORLD OF HONING..

KHUSHBU GROUP

Khushbu Engineers
F-24/1, M.I.D.C., Shirol,
Kolhapur- 416 122.
Maharashtra, India.

Ph. +91 9371658016
Ph. +91 9372658018

honing@khushbuindia.com
marketing@khushbuindia.com

www.khushbuindia.com

