



## **COMPANY PROFILE**

### **Quality Policy :**

We at **PRIZM Automation** are committed to be the first choice of our customers for their requirements of the manufacturing of Control Systems for machine automation to process automation. We shall achieve this by :

- Offering innovative, reliable and technically competent products at **COMPETITIVE PRICES**.
- Meeting customer's changing expectations and needs consistently.
- Making planned **IMPROVEMENTS** in quality of products and services.
- Making **SUBCONTRACTORS AS PARTNERS** in our business and Progress.
- Being continually cost effective in all operations.
- Providing need based training for employees at all levels.
- Adopting efficient manufacturing processes and practices.

### **Company Registration Details :**

- Name of the Firm : PRIZM AUTOMATION
- Regd. Address : Flat-6, Plot-431, Sector-2, Swapnapurti Apartment, Samarth Colony, Indrayaninagar, Bhosari, Pune – 411026
- Works. Address : G-10, First Floor, Mangalmurti Industrial Complex, Behind Hockey Stadium, MIDC, Bhosari, Pune – 411026
- Phone : 9552560741
- Email ID : [sales@prizmautomation.com](mailto:sales@prizmautomation.com) ; [projects@prizmautomation.com](mailto:projects@prizmautomation.com)
- Website : [www.prizmautomation.com](http://www.prizmautomation.com)
- GST NO. : 27ACKPT5561D1ZC
- PAN No. : ACKPT5561D
- YEAR OF ESTABLISHMENT : 2007



## Company Background ::

**PRIZM AUTOMATION** founded in December 2006 to meet the growing requirements of Power System Engineering, Process Control and Industrial Automation systems.

## Work Activities :

**PRIZM AUTOMATION** activities are organized into following business segments.

- PLC / HMI / VFD's based system automation. ( MITSUBISHI / SIEMENS / ALLEN BRADLEY / DELTA )
- Data Acquisition Industrial Software. (Ellipse SCADA, ABB Compact HMI).
- Erection and Commissioning of PLC based Control Systems.
- Conducting Seminar / Training program on PLC based Control Systems.
- The work includes the design and engineering of PLC based Control System, delivery of equipment, erection, testing and commissioning of electrical distribution systems.
- **PRIZM AUTOMATION** offers a wide range of industrial products and systems which includes : PLCs, HMIs, Variable speed DC drives, DC Injection Braking, System for AC Drives, Digital Control System, Control Panels for SPMs etc.
- **PRIZM AUTOMATION** has expertise on total system Automation using Programmable Logic Controllers for improved product quality and output.
- **PRIZM AUTOMATION** Offers Data Acquisition Software for various industrial process which is now a days becoming a need for complicated industrial process controls.
- To keep ourselves in line with future, we wish to enter into area of "Low Cost Automation" by going in for System House concept.

We at **PRIZM AUTOMATION** believe in delivering quality, ensure timeliness and hence in a nut shell, believe in "Customer Delight". We are certainly committed to achieve this height with highest level of commitment.

### **Our Expertise Area of Control System Solutions for Following Application :**

- Auto Transporter System – Pre-Treatment, Electro-Plating, CED Coating Plant.
- Material Handling System – Slat & Overhead Conveyors
- Assembly Line Automation – Engine assembly, Weld Line, Final Assembly
- Identification & Traceability - Barcode Scanner, Barcode Printer, Marking Machines, Number Punching solution
- Retrofitting of Control System for Hydraulic / Mechanical Press – HMT, ISGEC, BEMCO
- Furnace Automation – H & T Furnace, Batch Plant, Continuous Plant.
- Production management - Poka – Yoke & ANDON System
- Leak Testing – ATEQ Leak Testing M/c. using communication protocol
- PLC interface with Third Party Instrumentation devices for data transfer – Temperature scanner, Controllers, Energy Meters, VFD's, Weighing Scale, Inclinator, Absolute Encoder, Magnetic Compass, GSM Modem
- Solar Tracking – PLC control system using Inclinator for measurement of Altitude Angle & Absolute Encoder for measurement of Azimuth Angle.
- Load Bank – Effective Resistive Load based testing of generators with recipe management.
- Auto Mains Failure – Auto Changeover from MSEB to Genset & Vice Versa.
- Energy Saving using VFD's for compressor, Blower, Pumping System.
- Retrofitting of Old PLC system i.e Siemens S5 Series, Messung X-40, X-20 , Micro Series PLC's with minimum machine breakdown time.

**We Offer Complete Software Development, Installation & Commissioning for following Brand PLC / HMI / VFD / SERVO / SCADA / Third Party Device Interface:**

- **PLC's :** ABB – AC500 Series, Schneider Series PLC's, OMRON CP-Series, DELTA DVP,  
Mitsubishi – Nexgenie 5000, 2000 & 1000 Series  
Mitsubishi – Fx-3U Series, Fx-5U Series, Q-Series  
Siemens – S7-200 Series, S7-300 Series, S7-1200 Series  
Allen Bradley – Micro Logix Series, Compact Logix Series
- **HMI's :** ABB – CP400, 500 Series, Schneider Magelis series, OMRON NB Series  
Mitsubishi – Ex-Series Jr.HMI, Sr.HMI, SMARTOUCH Series  
Mitsubishi – GOT-1000 Series, E-1000 Series, Siemens – TP series  
Delta – DOP Series, Allen Bradley – Panel View Series
- **VFD's :** Hitachi – HH10, HH100, HH180, HH200 WJ200, SJ700, SJ700D Series  
Mitsubishi – FRD-700, FRE-700, FRA-700, FRF-700 Series  
Schneider Altivar Series, Delta D, E Series,
- **SERVO's :** Mitsubishi – MR-JE Series, MR-J2 Series, MR-J3 Series, Panasonic MINAS
- **SCADA :** Siemens WinCC, Elipse Pro-32, Elipse E3, INDUSOFT
- **SCANNER :** Symbol, Keyence, Cognex    **BARCODE PRINTER :** TSC, ZEBRA
- **MARKING :** Technifor, Telesis, Sic
- **MODEM :** Visiontek (82GM) , TMS (T-61BGS2 )
- **LEAK TEST:** ATEQ    **ANDON :** SPA, Ajinkya, Crystal , SCADA based LCD Display

**Our Extended Arm for Electro-Plating / CED Coating Plant Manufacturing Set-Up :**



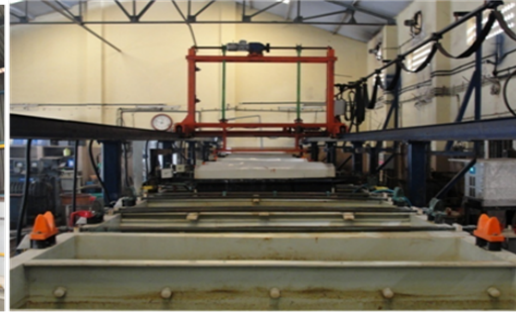


1. **Alpha Enterprises** – Design, Manufacturing & Installation of Pre-Treatment, Electro-Plating, CED-Coating Plant with complete Mechanical Railing Structure, Transport Wagons & Tanks ( PP OR MS ) and Auto Transporter using PLC Control System.

**Application Glimpses :**



CED Coating



Electroplating



Vehicle Assembly



Engine Assembly



SPM



Forging Press



Furnace



Solar Tracking



Panel Manufacturing :

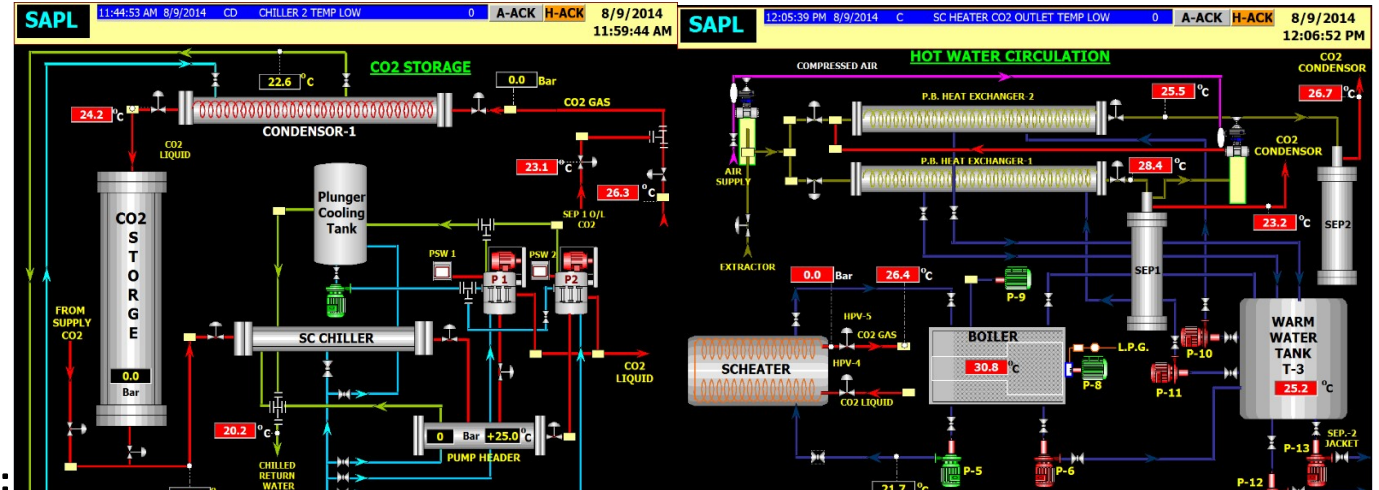




## Panel Manufacturing :

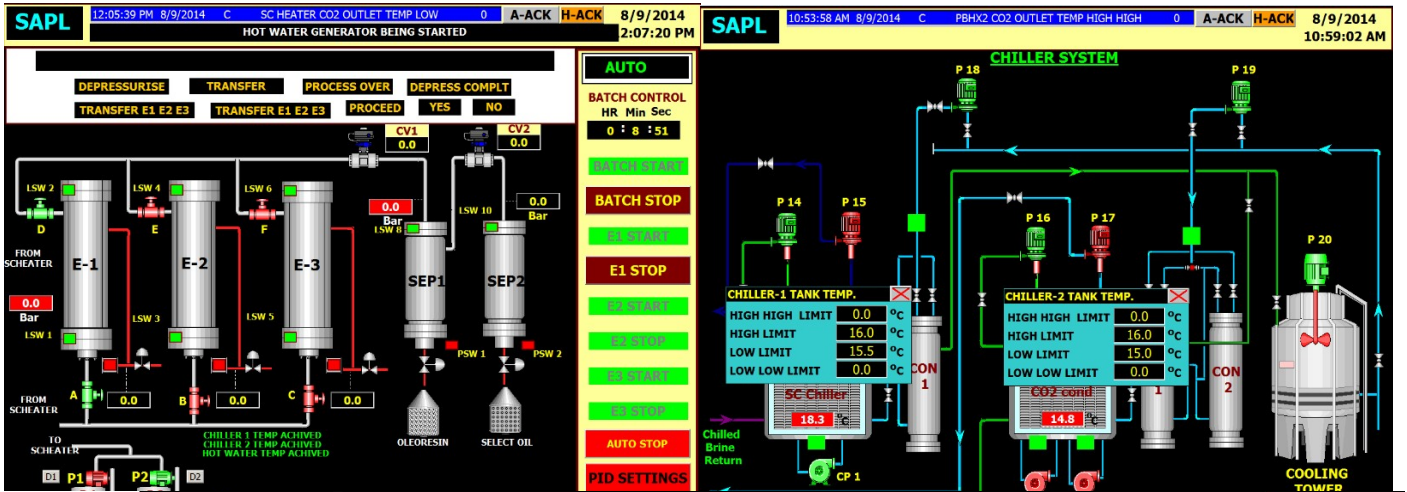


## SCADA SCREENS

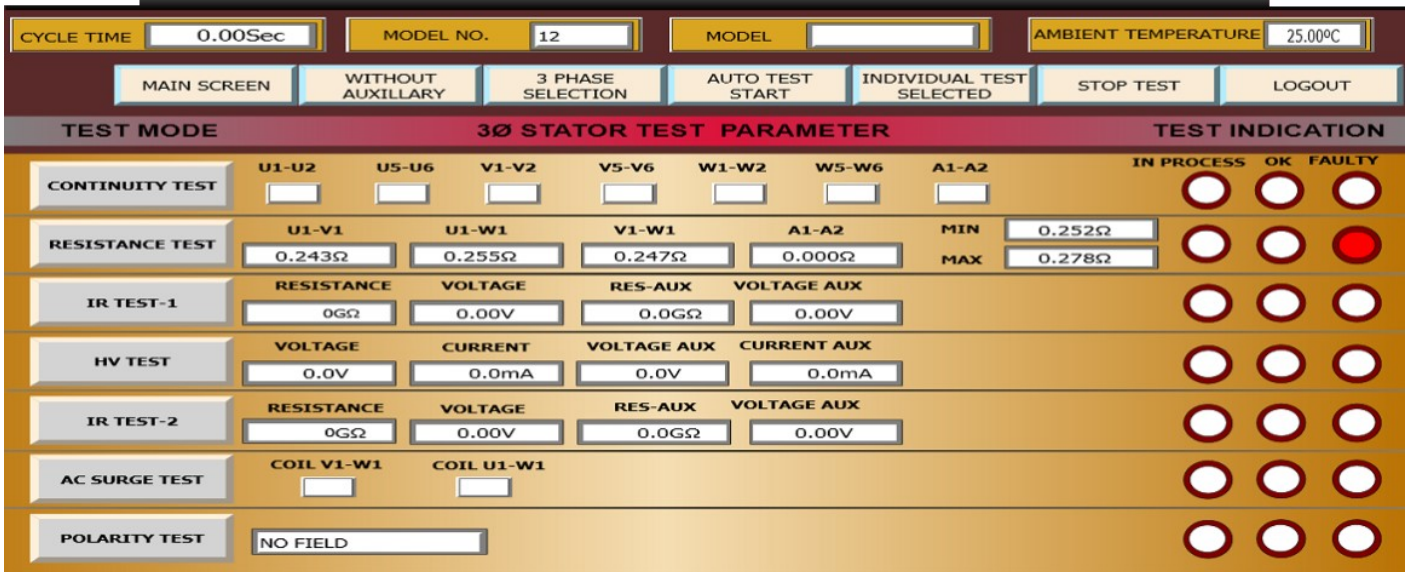




## AUTOMATION FOR SURFACE TREATMENT PLANTS



## STATOR WINDING PARAMETER TEST MACHINE



## AUTOMATION TRAINING SERVICES

*We Take this opportunity to thank our customers, who has been with us all the time of success and failures too. Its only there round the clock support, understanding and above all satisfaction that has kept us in Business all these years.*

*Further as a part of expanding boundaries of our business and utilizing the knowledge based expertise of Automation filed, We take immense pleasure and pride to announce our new services and activities of Training Services for INDUSTRIAL AUTOMATION . We have found this to give customer's the greatest return on their training investment.*

*A separate department has been put in function for conducting activity of training for Engineering Students and Industrial Working professionals on INDUSTRIAL AUTOMATION.*



*We would be very happy to know about such requirement of yours about training people for PLC based Automation. The detail course contents with other pre-defined structure of the program will follow soon.*

