

Page	Content
4	Range overview <ul style="list-style-type: none">- Classic- Tuff- Endura- Gamma
4	Continuous Designs
12	Grid & Motif Designs
34	Wood Designs

Classic®

- **Type:** Printed flooring
- **Thickness:** 0.35, 0.40, 0.45, 0.50, 0.55, 0.60, 0.70, 0.80, 0.90, and 1.0 mm
- **Surfaces finishes:** Matt, Gloss, Deep Matt, Crust
- **Backing:** Deep Satin, Tusker Satin, Regular

Tuff®

- Type:** Non-tearing printed flooring
- Thickness:** 0.60, 0.70, 0.80, 0.90 and 1.0 mm
- Surfaces finishes:** Matt, Gloss, Deep Matt, Crust
- Backing:** Regular backing

Endura®

- Type:** Comfort acoustic flooring
- Thickness:** 1.2, 1.8 mm
- Surfaces finishes:** Matt, Gloss, Deep Matt, Crust
- Backing:** Foam backing

Gamma®

- Type:** Heterogeneous Printed Flooring
- Thickness:** 1.2, 1.3, 1.5, 1.8, 2.0 mm
- Surfaces finishes:** Embossed clear wear layer
- Backing:** PVC backing

Dimensions of rolls available

- 2 meter x 25 / 30 meter
- 79 inches x 30 yards
- 2 yards x 30 yards
- 72 inches x 30 yards

Special features

- Available in various designs, categorized as
 - Continuous design
 - Grid & Motifs
 - Wood designs
- Wide range of colours and patterns
- Cost effective flooring solutions

Applications

- Budget Hotels
- Movie Studios
- Porta Cabins
- Residentials
- Exhibitions Centers

Note: All ranges are available in all designs and colours.



Continuous designs

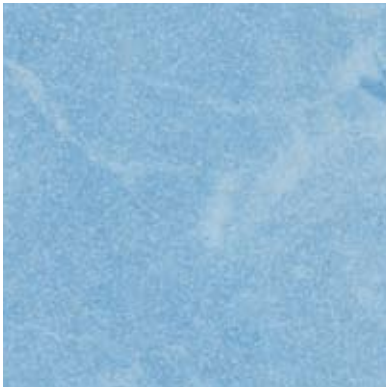
We listen. We're responsive.



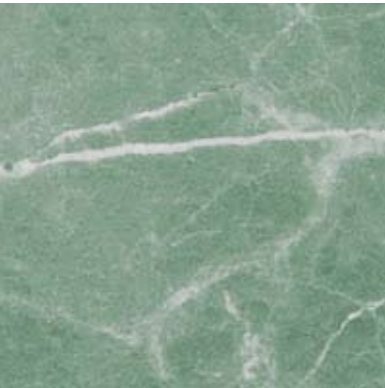
101-1 size of sample depicted 2.5"



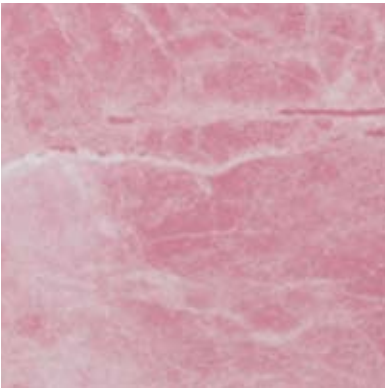
101-2



101-3



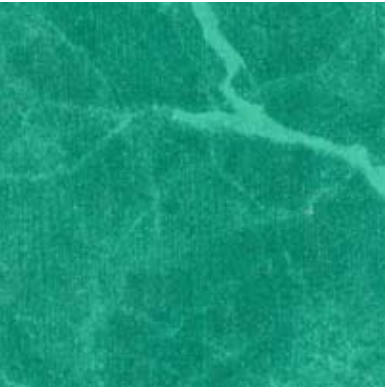
101-11



101-12



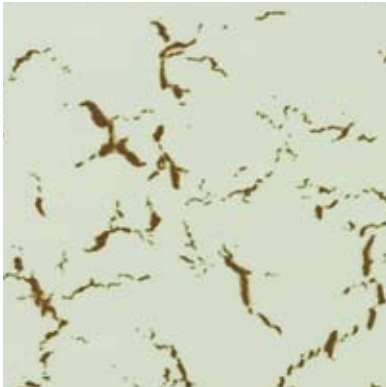
101-19



101-29



101-30



102-24 size of sample depicted 2.5"



102-31



103 - 2 size of sample depicted 2.5"



103 - 15



104 - 19 size of sample depicted 6.5"



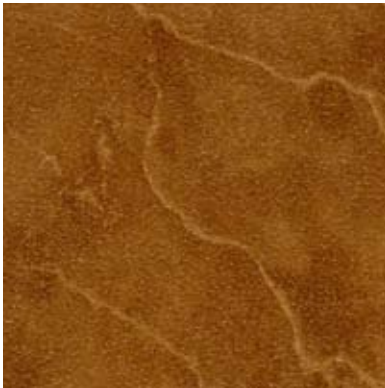
106 - 1 size of sample depicted 3.5"



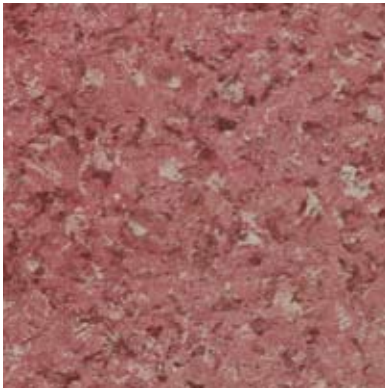
106-2



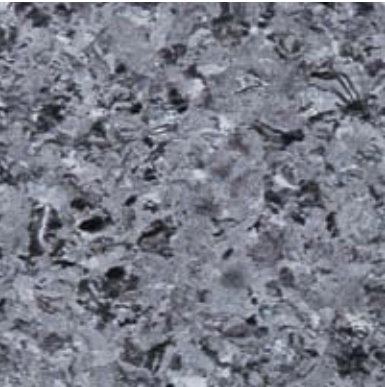
106-4



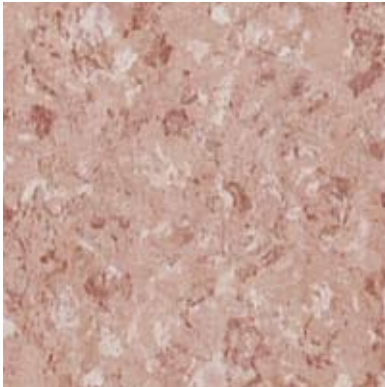
106-91



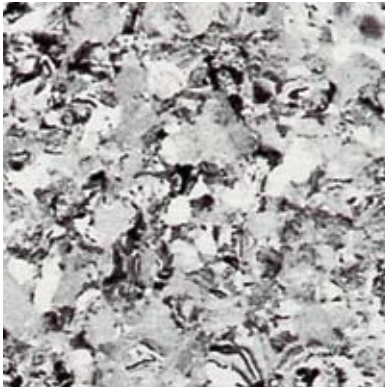
201 - 1 size of sample depicted 3.0"



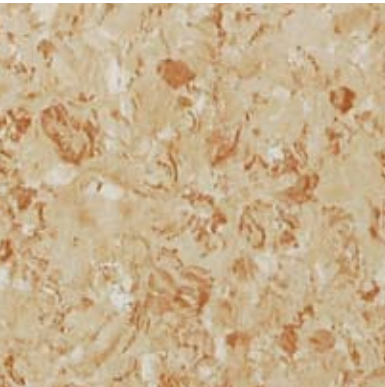
201 - 7



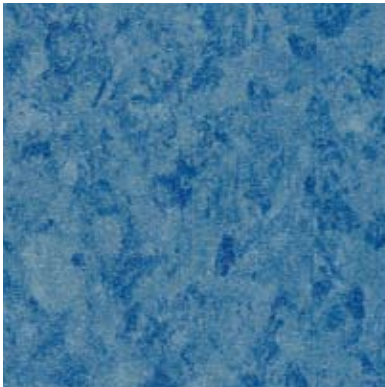
201 - 13



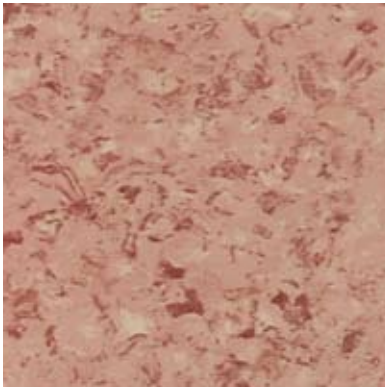
201 - 19



201 - 24

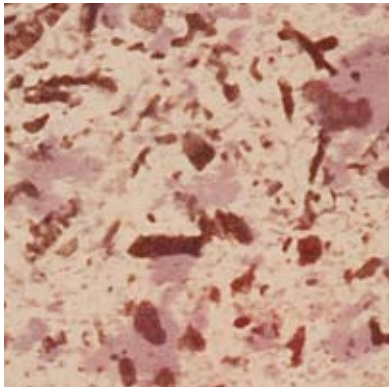


201-39

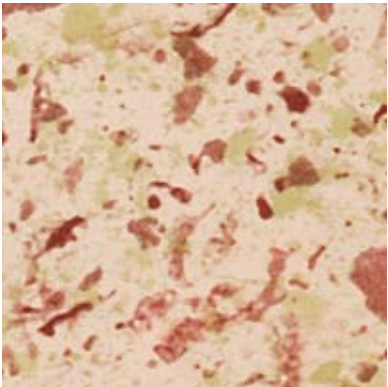


201-44

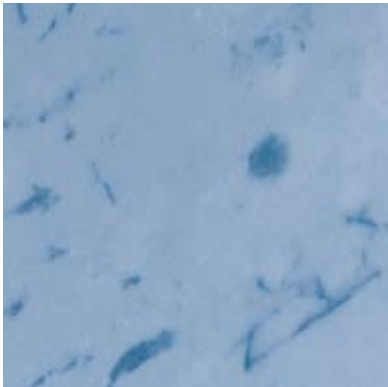
206 | 212



206-6

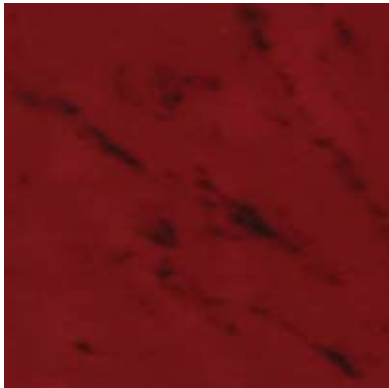


206-14



212-3 size of sample depicted 2.5"

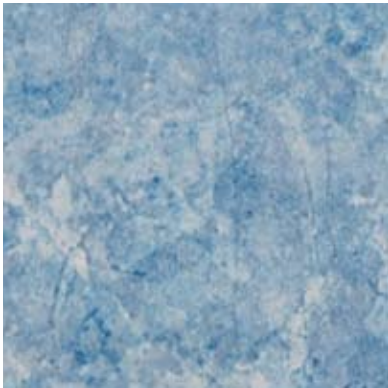
212 | 216



212-10



212-31



216-3 size of sample depicted 2.5"



216-4



216-7



216-91

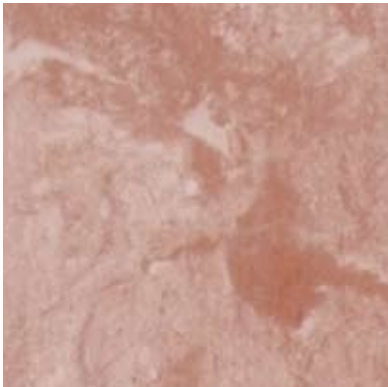
218 | 316



218-14 size of sample depicted 2.5"



218-40



316-1 size of sample depicted 2.5"



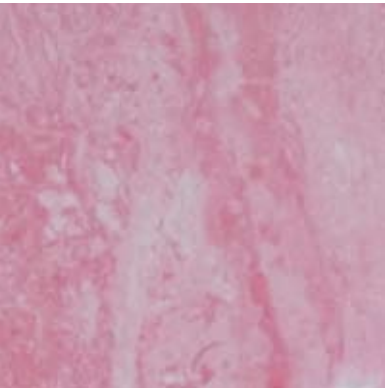
316-2



316-4



316-7



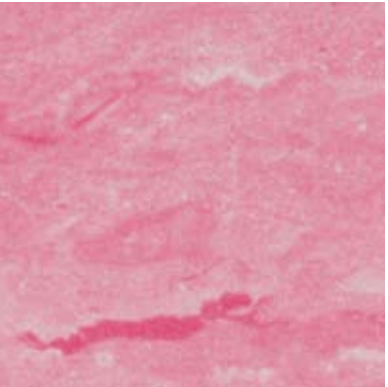
316-12



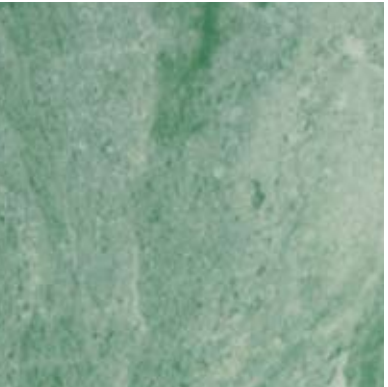
316-14



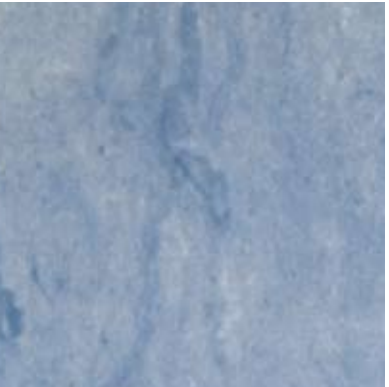
316-17



316-21



316-29



316-39



316-40



316-91



318-2 size of sample depicted 8.0"

316 | 318

348



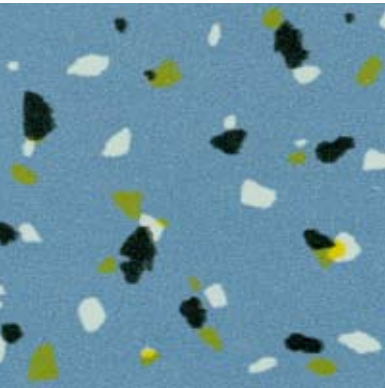
318-4



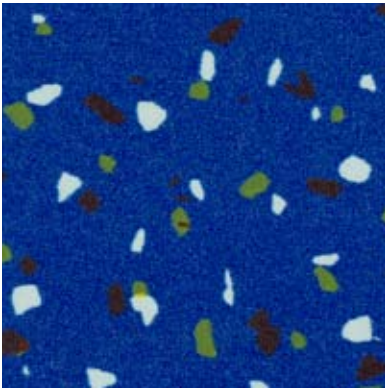
318-7



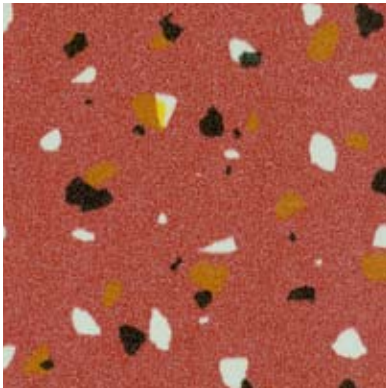
318-24



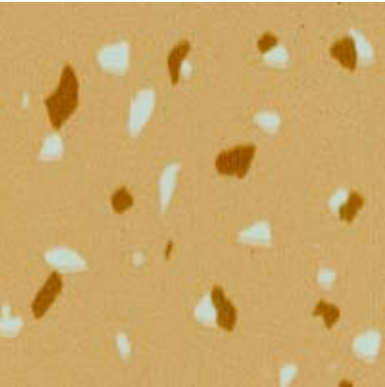
348-2 size of sample depicted 3.0"



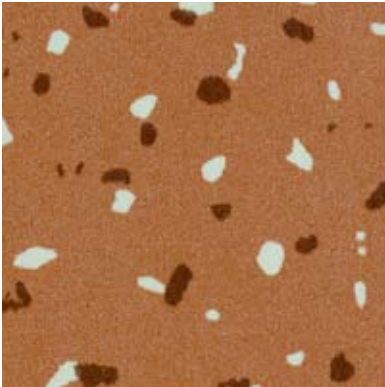
348-39



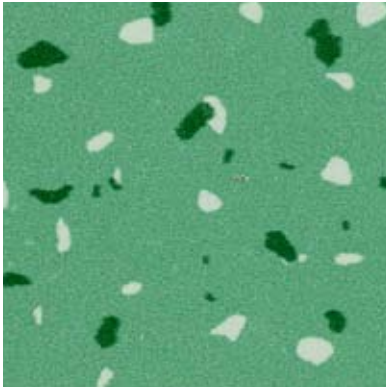
348-48



348-101-4

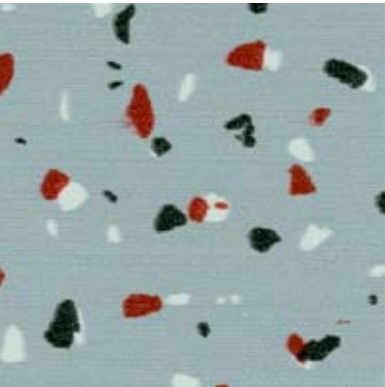


348-316-1



348-316-29

348 | 356



348-APS-5



356-5 size of sample depicted 7.0"

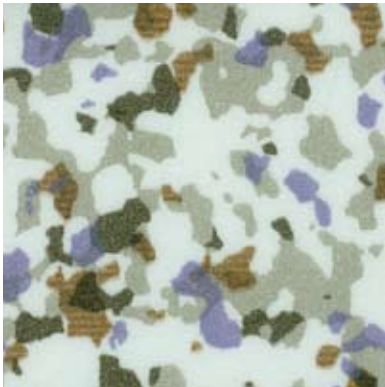


356-17

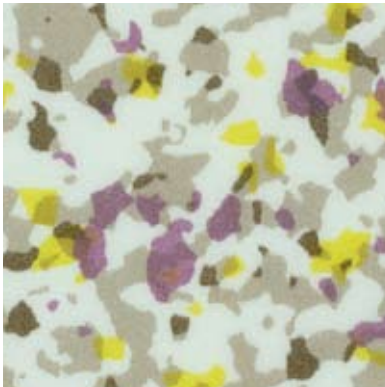
356 | 357



356-61



357-15 size of sample depicted 3.0"



357-51

550 | 551 | 555



550 size of sample depicted 2.5"

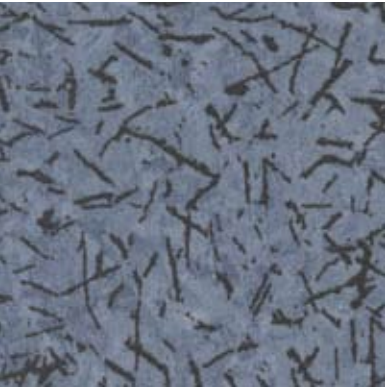


551

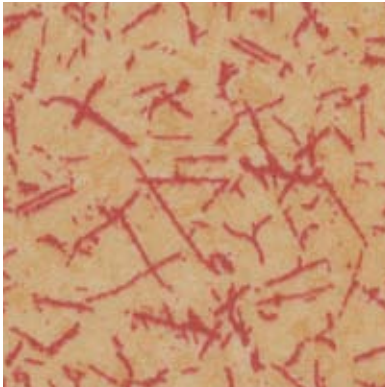


555

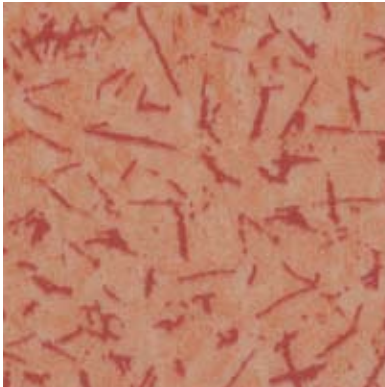
561 | 565 | 566



561

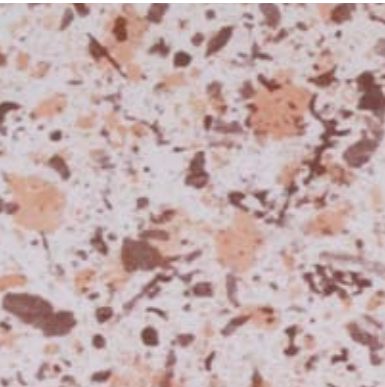


565

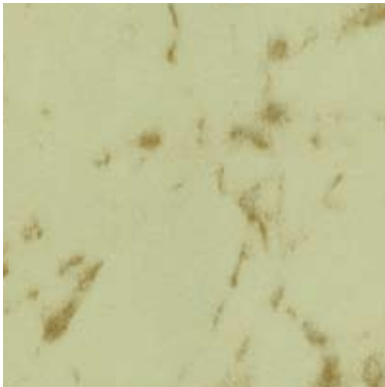


566

2118 | 5512



2118-3 size of sample depicted 3.5"



5512-M3 size of sample depicted 2.0"



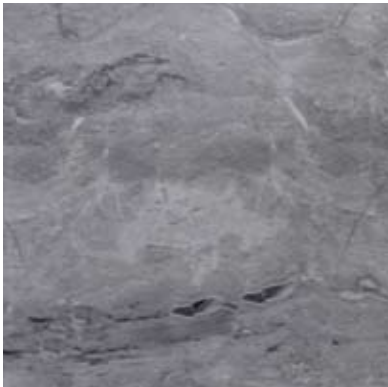
5512-M9 size of sample depicted 2.0"

Continuous designs

A - 656



A - 656 - M2 size of sample depicted 2.5"



A - 656 - M5



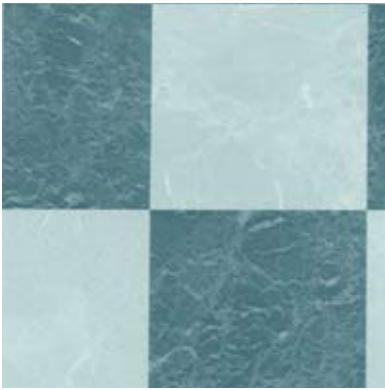
A - 656 - M6



107 | 202



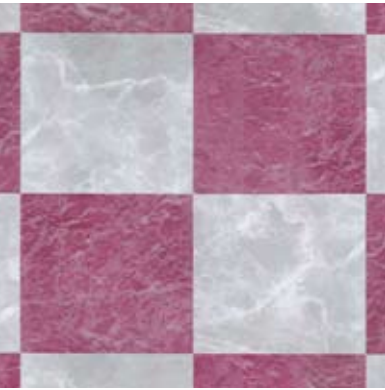
107 - 19 size of sample depicted 9.3"x 13.5"



202 - 2 size of sample depicted 8.5"



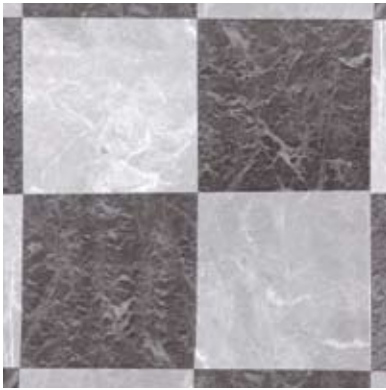
202 - 5



202 - 10



202 - 14



202 - 19

204



204 - 3 size of sample depicted 7.0"



204 - 4



204 - 7



204 - 9 size of sample depicted 10.0"x 14.2"



204 - 10



204 - 11



204 - 14



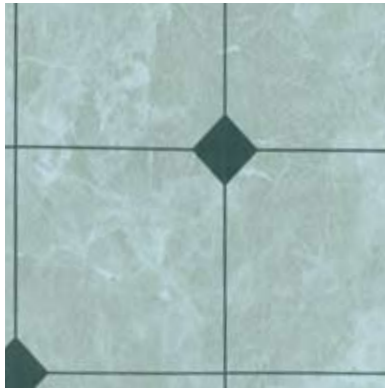
204 - 15



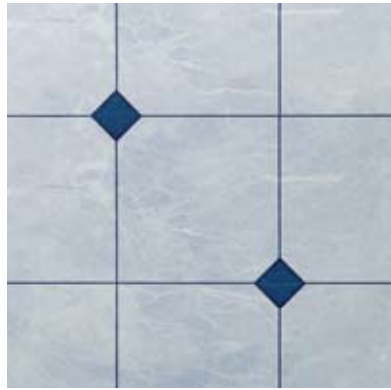
204 - 36



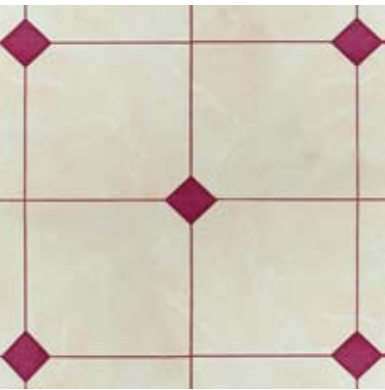
204 - 57



207 - 2



207 - 3



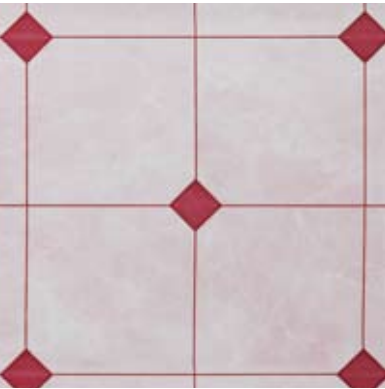
207 - 4 size of sample depicted 11.5"



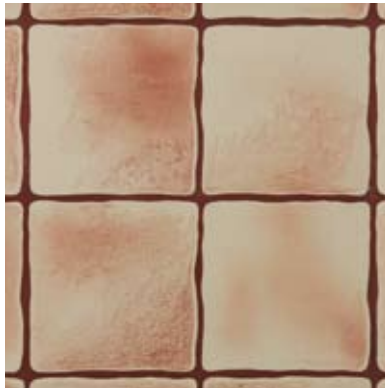
207 - 7



207 - 8

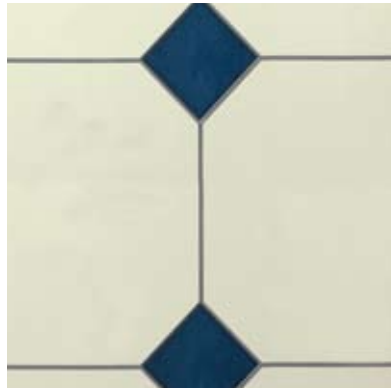


207 - 12



209 - 1

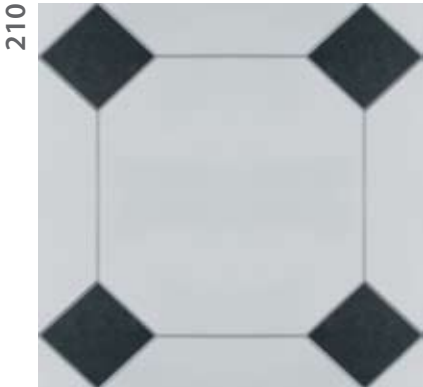
size of sample depicted 9.0"



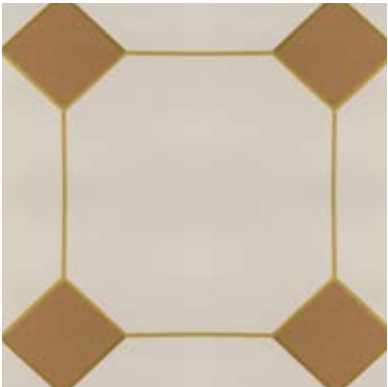
210 - 3

204 | 207

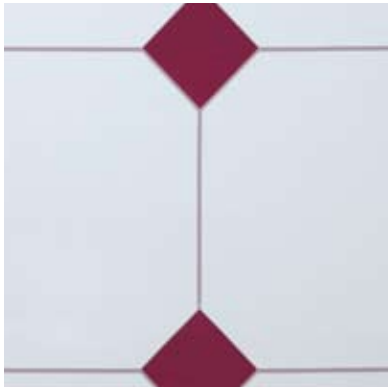
207 | 209 | 210



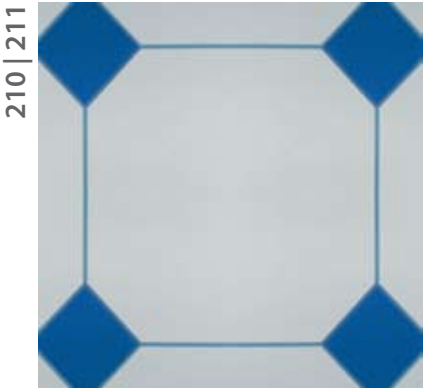
210-19 size of sample depicted 7.0"



210-20



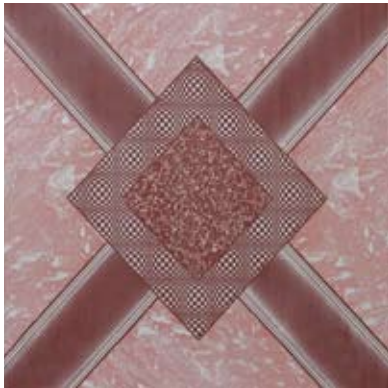
210-21



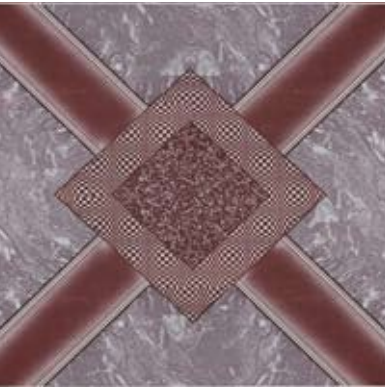
210-30



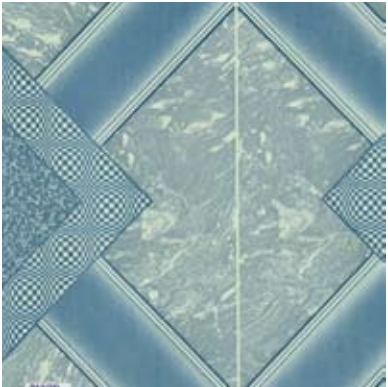
211-1 size of sample depicted 10.0"



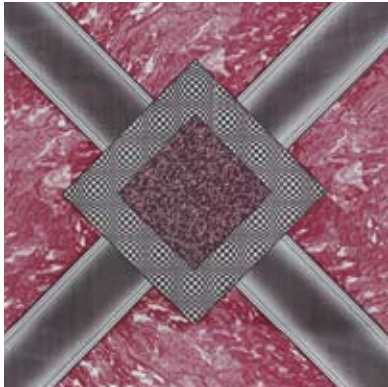
213-1 size of sample depicted 9.5"



213-5



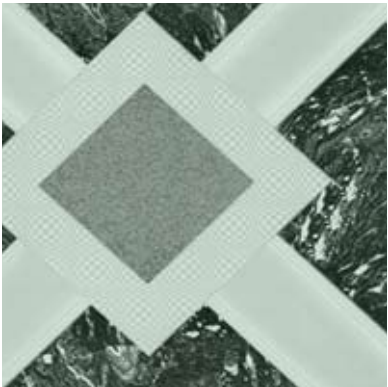
213-7D



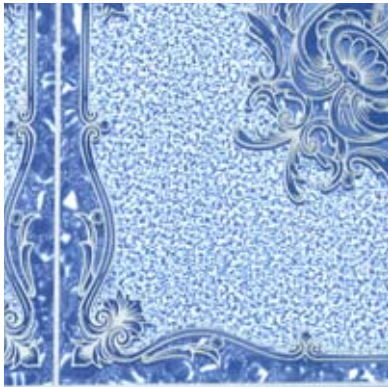
213-10



213-15



213-17



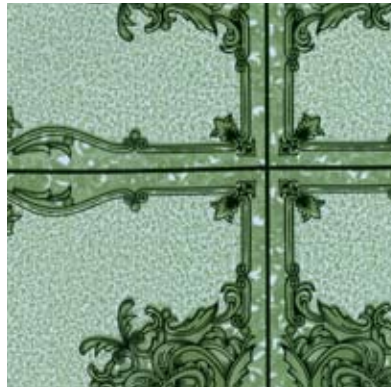
229-3 size of sample depicted 6.0"



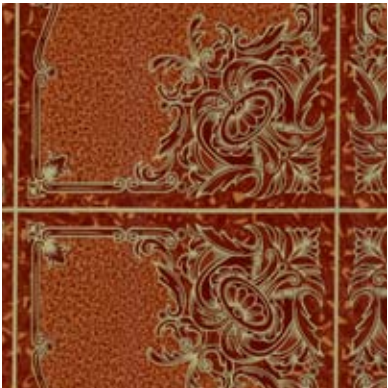
229-4



229-10



229-11



229-91



230-3 size of sample depicted 7.0"



230-10



230-15



230-16



302-1 size of sample depicted 7.5"



302-4



302-5



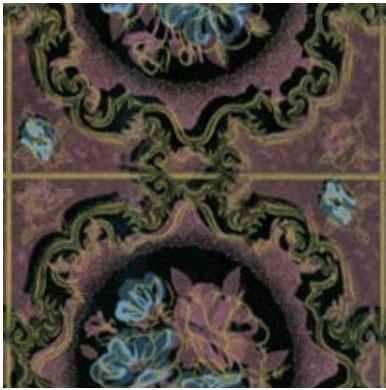
302-7



302-8



302-17



302-19



302-20



302-21



302-42



302-48



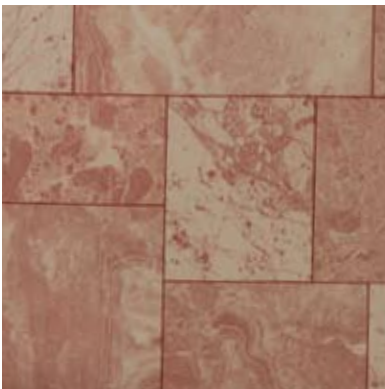
302-49



302-91



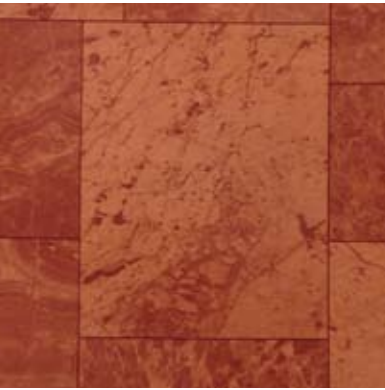
303-4



303-14



303-15 size of sample depicted 9.5"



303-91



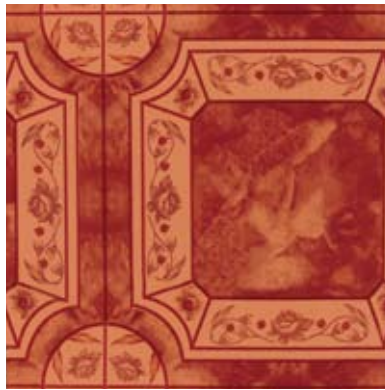
308-3 size of sample depicted 7.2"



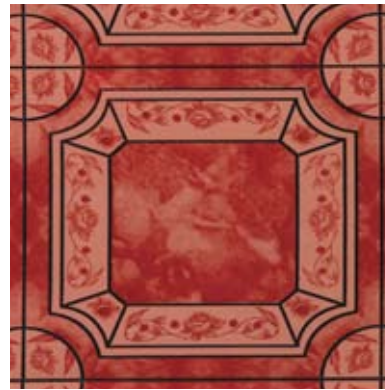
308-4



308-8



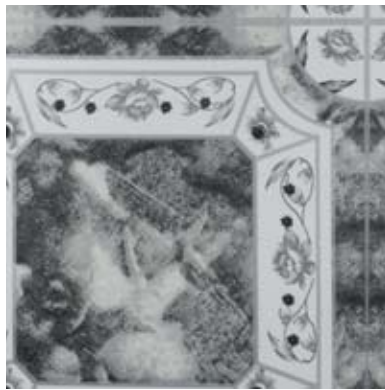
308-9



308-10



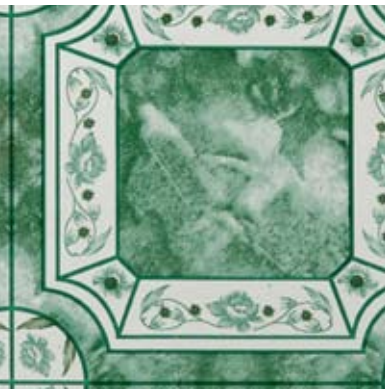
308-15



308-17



308-27



308-29



308-36



308-45

303 | 308

303

312



312-3 size of sample depicted 7.2"



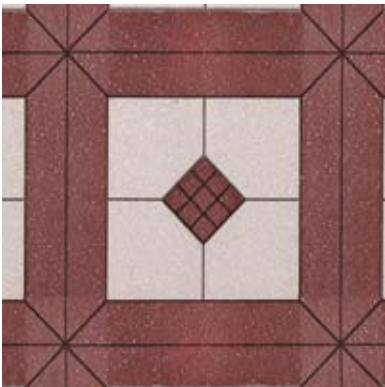
312-10



312-23



312-35

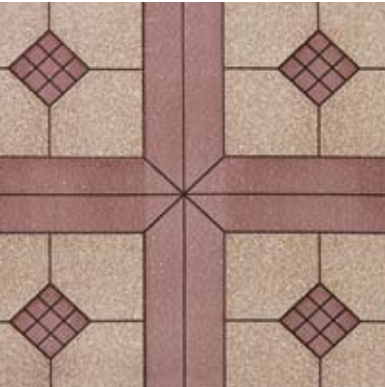


312-35D



312-36

312 | 319



312-37

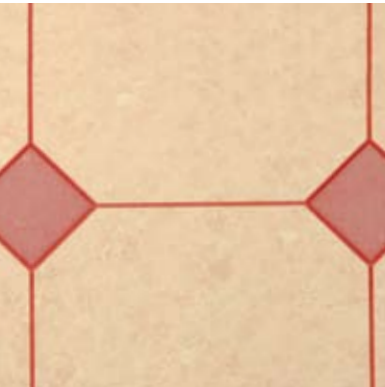


319-1 size of sample depicted 8.0"



319-3

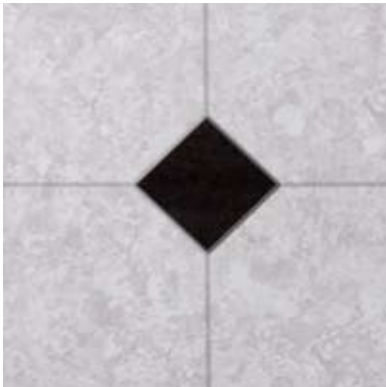
319



319-4



319-8



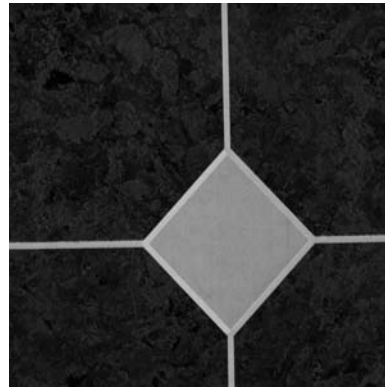
319-19



319-21

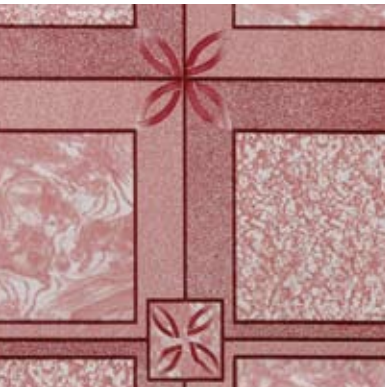


319-36



319-38

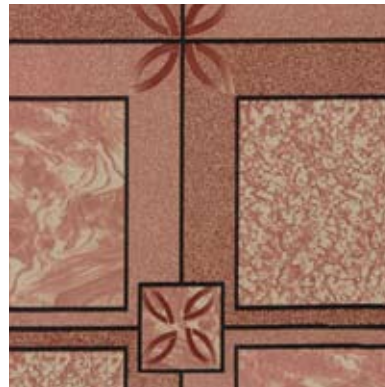
319



320-1 size of sample depicted 9.5"



320-10

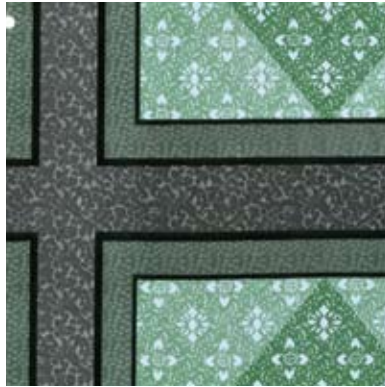


320-35

320



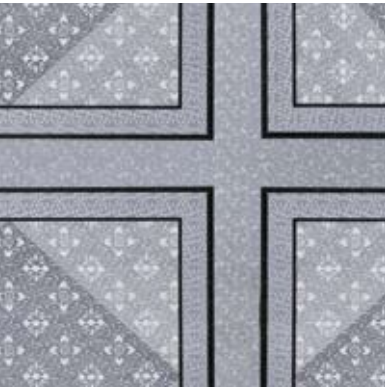
321-1 size of sample depicted 9.0"



321-11



321-15



321-16

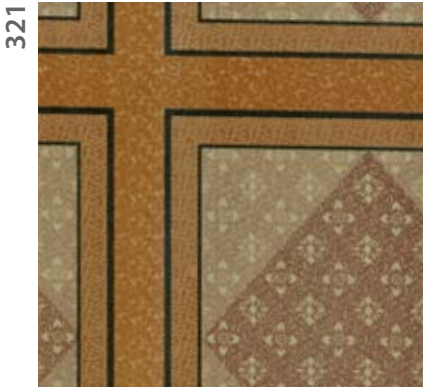


321-17



321-26

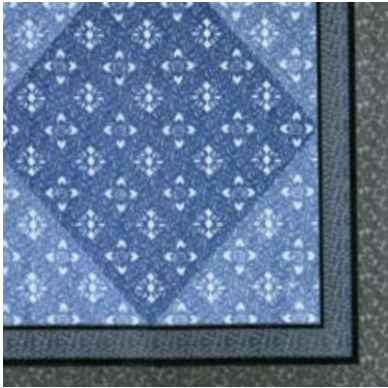
321



321-35



321-36



321-39



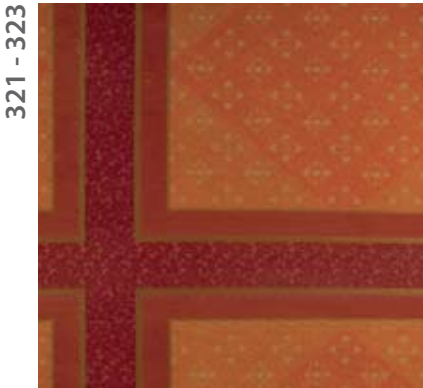
329-5



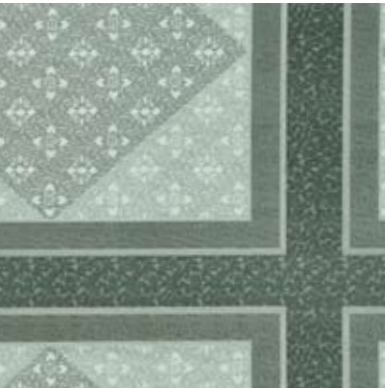
329-15



329-16



321-49



321-50



323-1 size of sample depicted 5.5"



329-24

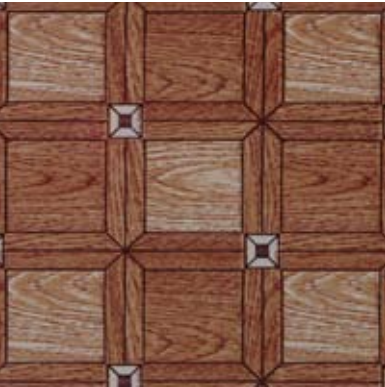


330-1 size of sample depicted 7.5"



330-9

329 | 330



323-4



323-6



323-9



340-2 size of sample depicted 5.8"

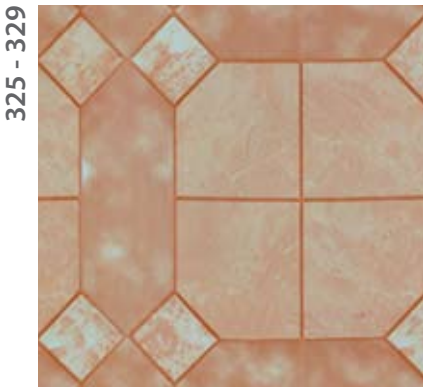


340-15

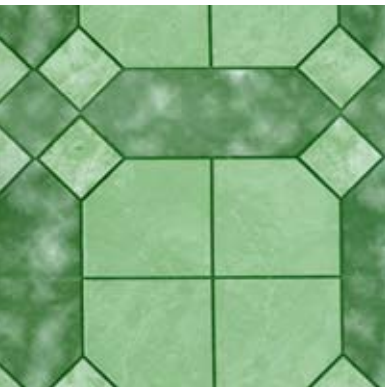


340-15G

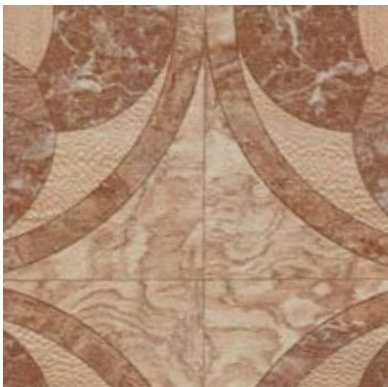
340



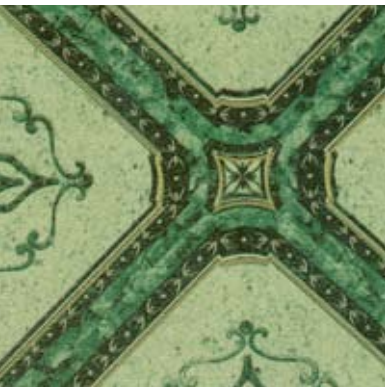
325-6 size of sample depicted 10.5"



325-8



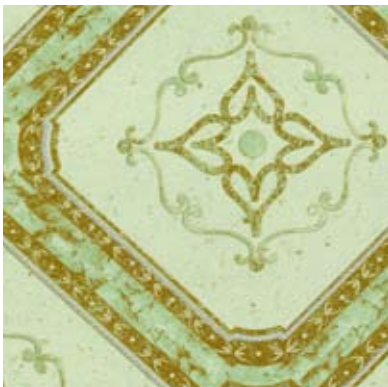
329-1 size of sample depicted 8.0"



340-18



340-51



340-60

340 | 341



340-61



341-2 size of sample depicted 9.0"



341-4



341-11



341-15



341-91

342



342-1 size of sample depicted 7.0"



342-27



342-29

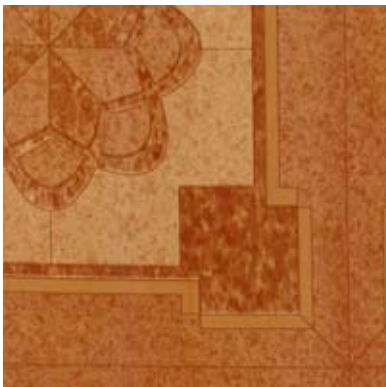
342 | 349



342-61



349-2 size of sample depicted 7.5"



349-4



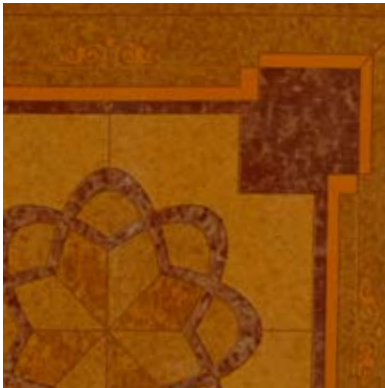
349-17



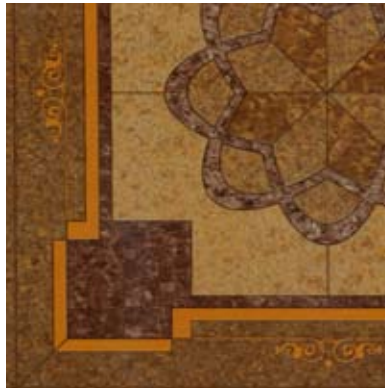
349-24



349-36



349-48



349-49



349-54

349



350-1 size of sample depicted 8.5"



350-15

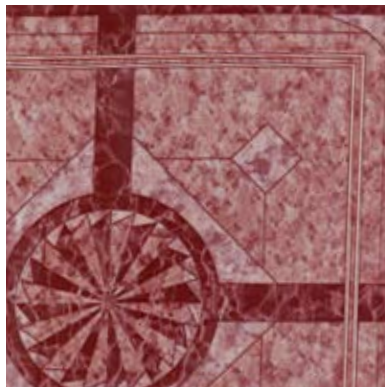


350-17

350



350-91



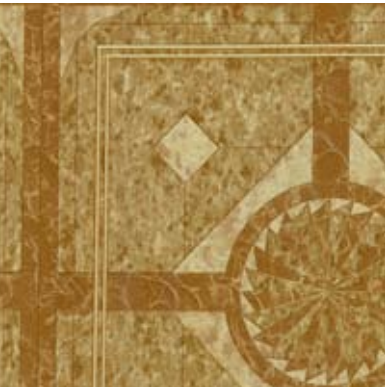
351-1 size of sample depicted 7.5"



351-6

350 | 351

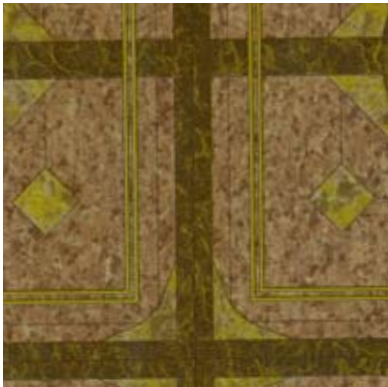
351



351 - 15



351 - 36



351 - 45

351 | 352



351 - 48



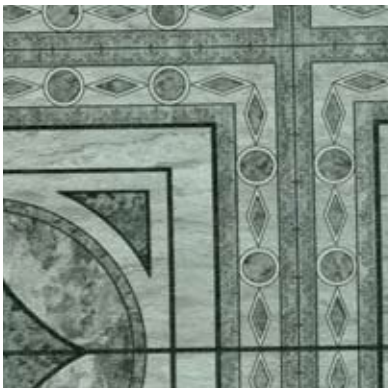
352 - 3 size of sample depicted 7.0"



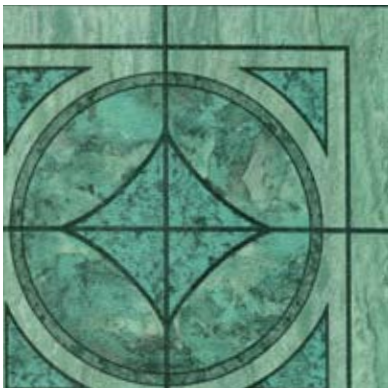
352 - 4



352 - 6



352 - 7



352 - 11



352 - 24



352 - 25



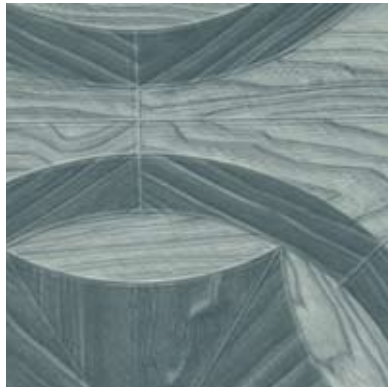
352 - 48



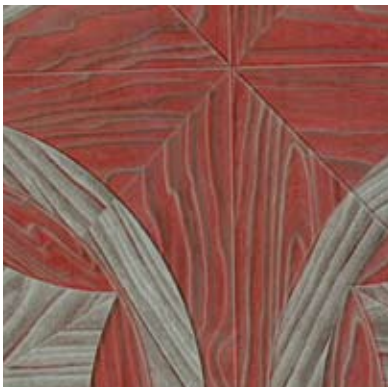
352 - 91



353 - 1 size of sample depicted 8.5"



353 - 2



353 - 10



353 - 25



353 - 36



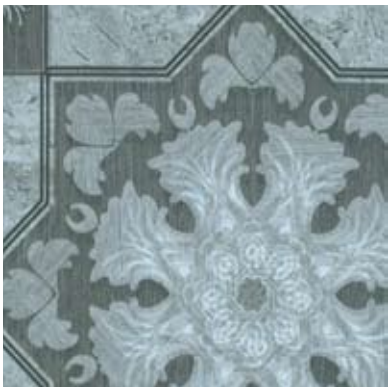
353 - 60



353 - 61



354 - 15



354 - 17 size of sample depicted 8.0"



354 - 32



354 - 91

352 | 353

353 | 354

402



402-4 size of sample depicted 9.5"

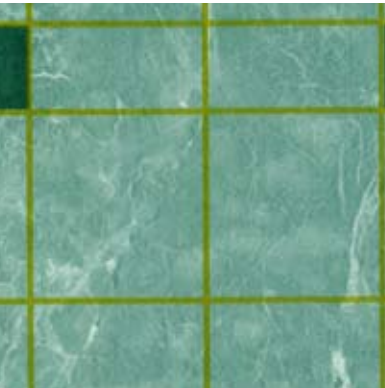


402-16



402-17

402 | 404



402-18



404-2 size of sample depicted 7.5"



404-12

404 | 511



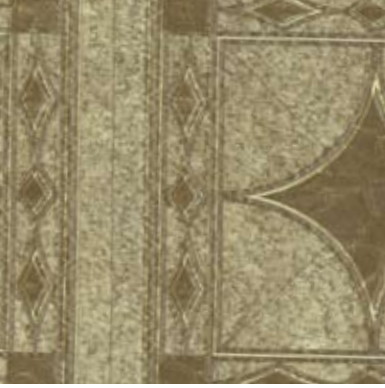
404-24



404-APS



511-3 size of sample depicted 9.3"



511-5



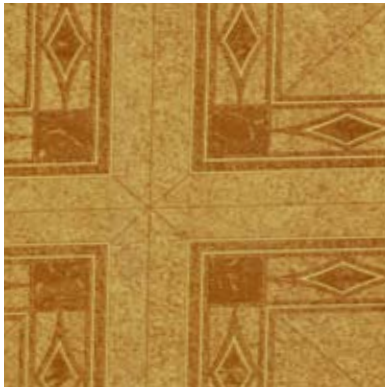
511-7



511-24



511-48



511-60



511-61

511



512-3 size of sample depicted 9.0"



512-4



512-5

512



512-7



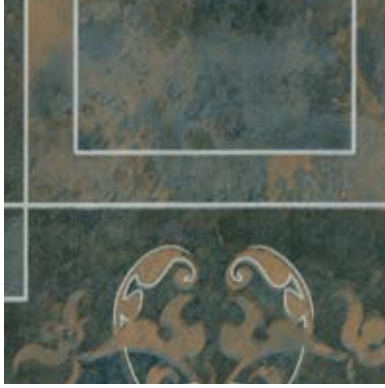
512-8



512-10



512-26



512-48

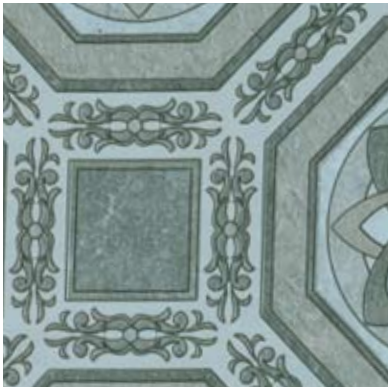


512-61

513



513-10 size of sample depicted 8.0"



513-17



513-29



513-36



513-48



513-60



513-61



513-62



513-91

514



514-1 size of sample depicted 7.0"



514-2



514-24



514-40



514-48

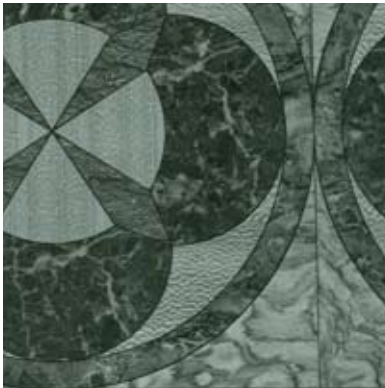


514-60

514



557-M3 size of sample depicted 8.0"

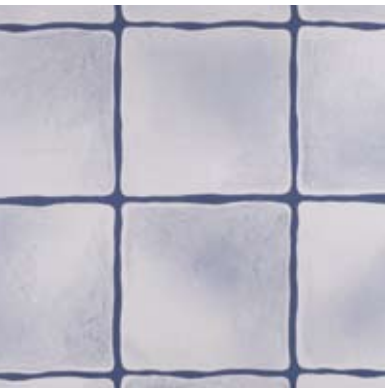


557-M5



557-M8

557



1102-1 size of sample depicted 10.0"

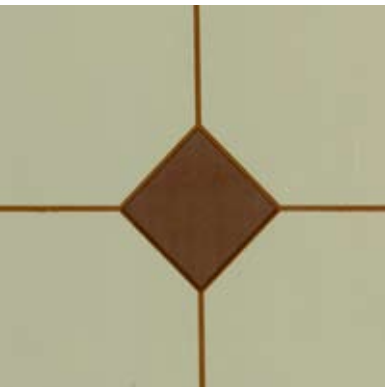


1103-1 size of sample depicted 10.0"



1103-2

1102 | 1103



1104-3 size of sample depicted 5.2"



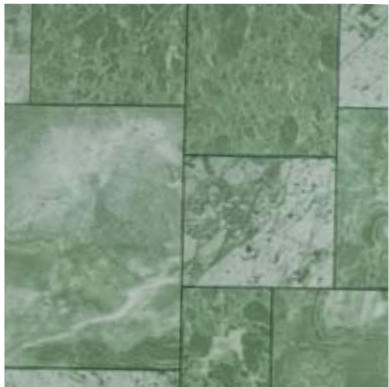
1105-1 size of sample depicted 9.9"



1105-2

1104 | 1105

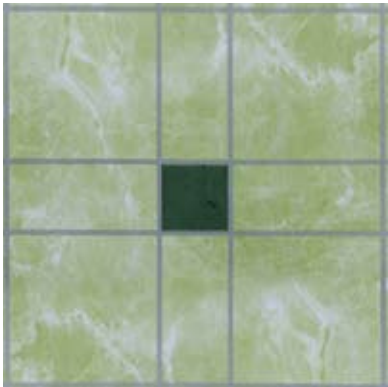
1105 | 1108



1105-3



1108-1 size of sample depicted 9"



1108-2

1108 | 2110 | A-6510



1108-3



2110-1 size of sample depicted 9.0"



A-6510-D size of sample depicted 9"



A-6510-E

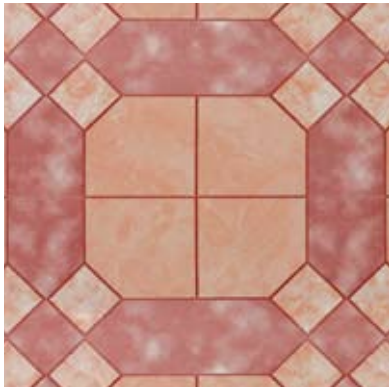


A-6510-F

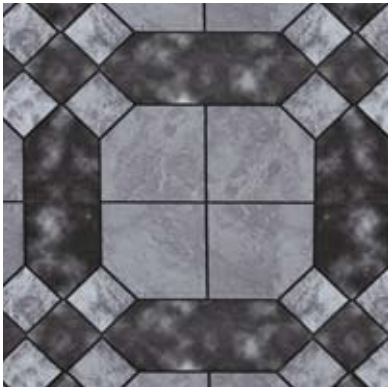


A-6510-H

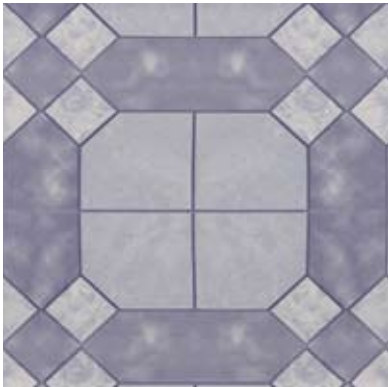
O-559



O-559-M4 size of sample depicted 10.5"

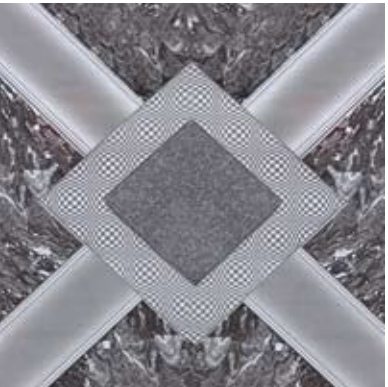


O-559-M5

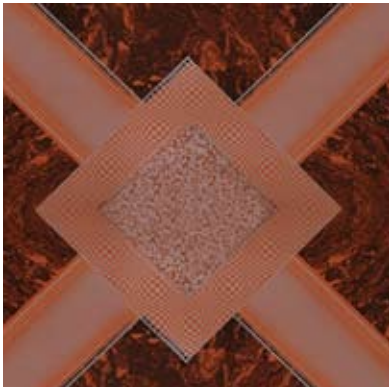


O-559-M9

O-5510



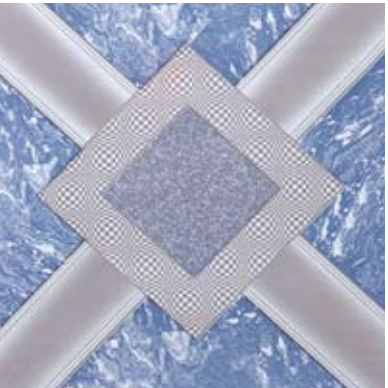
O-5510-M1 size of sample depicted 9.5"



O-5510-M2



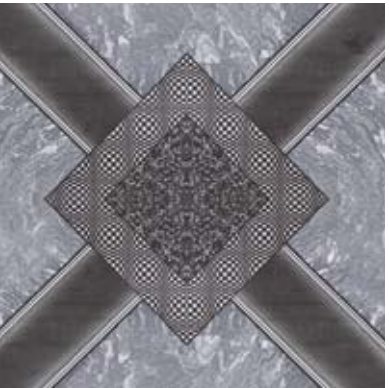
O-5510-M3



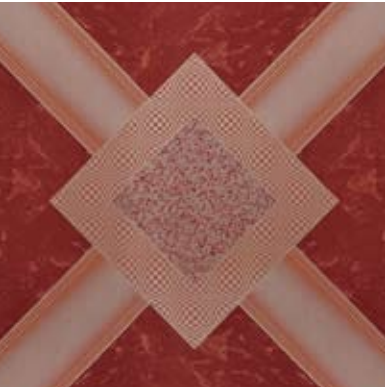
O-5510-M5



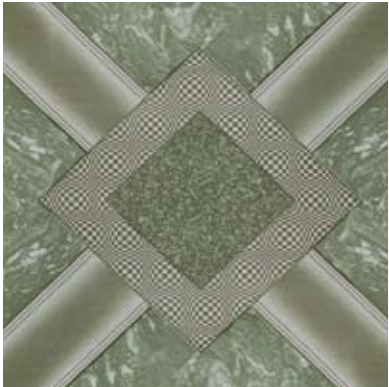
O-5510-M6



O-5510-M7



O-5510-M11



O-5510-M13



O-5511-M1 size of sample depicted 9.5"

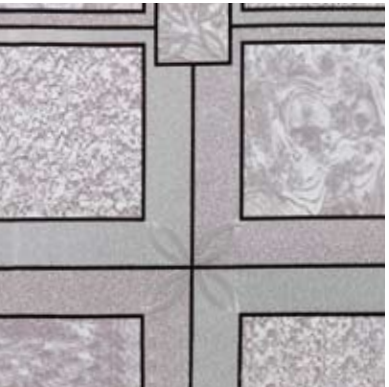
O-5510 | O-5511



O-5511-M2

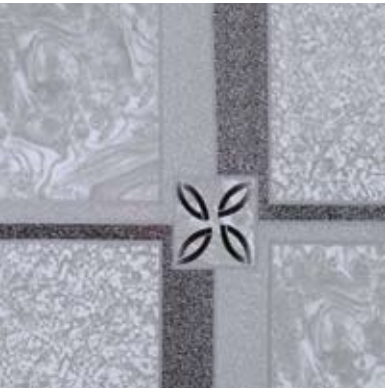


O-5511-M3



O-5511-M5

O-5511



O-5511-M7

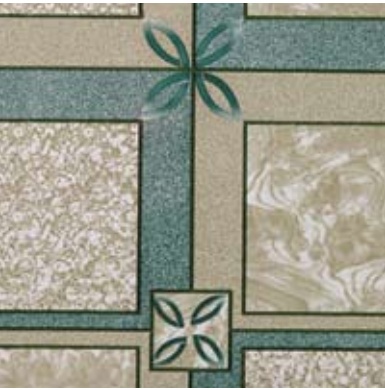


O-5511-M8



O-5511-M12

O-5511 | O-5513



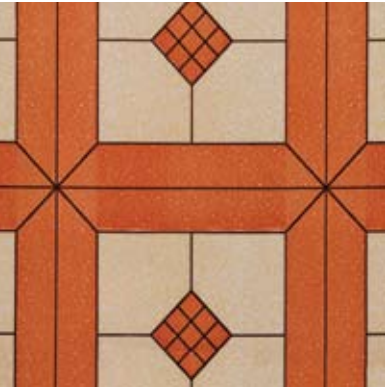
O-5511-M13



O-5513-M1 size of sample depicted 8"



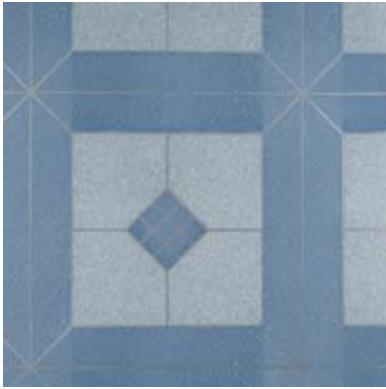
O-5513-M2



O-5513-M3

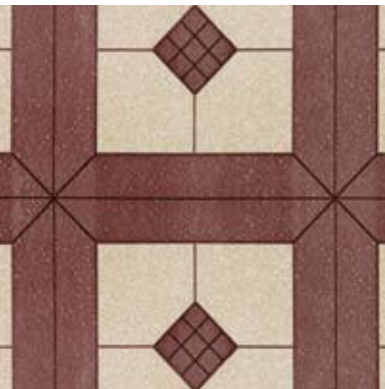


O-5513-M7



O-5513-M9

O-5513 | O-5514



O-5513-M14



O-5514-M1 size of sample depicted 8.5"



O-5514-M2

O-5514



O-5514-M3



O-5514-M6



O-5514-M12

Note: All ranges are available in all designs and colours.



220-1 size of sample depicted 4.5"

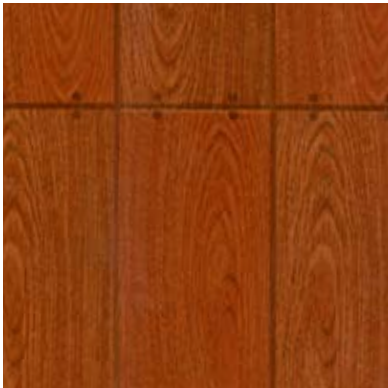


220-4



220-6

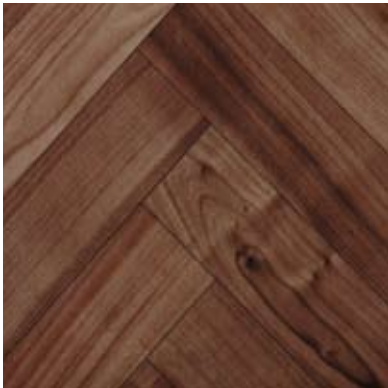
220



220-9

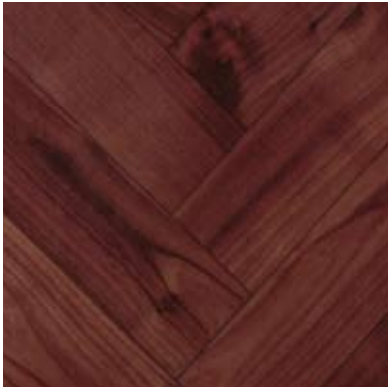


220-91



225-58 size of sample depicted 7.0"

220 | 225



225-59



225-60



225-61



225-91



300-1 size of sample depicted 6.5"



300-4

225 | 300

300



300-15 size of sample depicted 7.0"



300-26



300-32

300 | 306



300-91



306-1 size of sample depicted 6.0"



306-1D



306-4



306-24



306-35

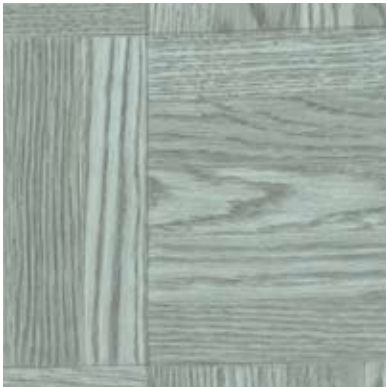
306 | 307



306-44



307-1 size of sample depicted 9.0"



307-2



307-4



307-9



307-24

307



307-91



326-4 size of sample depicted 7.5"



326-24

307 | 326



332-35 size of sample depicted 7.5"



332-60



332-61

332



335-58 size of sample depicted 6.0"



335-59



335-60

335

335 | 338



335 - 61



335 - 62



338 - 1 size of sample depicted 8.0"



338 - 4



338 - 32



338 - 35

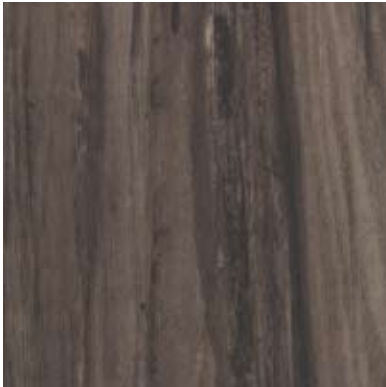
338 | 347



338 - 60



338 - 61



347 - 58 size of sample depicted 6.0"

347 | 355



347 - 60



347 - 61



355 - 32 size of sample depicted 8.0"

355



355 - 35



355 - 60



355 - 91

401



401 - 1 size of sample depicted 8.5"



401 - 4



401 - 9

401 | 403



401 - 91



403 - 1 size of sample depicted 8.0"



403 - 4



403 - 6



403 - 26



403 - 32

403 | 410



403-35



410-1 size of sample depicted 6.5"



410-4



410-24



410-32



410-35



410-47



410-60



410-62

410 | 411



411-24 size of sample depicted 6.8"



411-44



412-1 size of sample depicted 8.0"



412-3



417-1 size of sample depicted 9.5"



417-61

412 | 417



417-91



555-C size of sample depicted 8.5"



555-D

417 | 555



555-F



558-D size of sample depicted 5.5"



558-l

555 | 558



653-D size of sample depicted 7.0"



1101-1 size of sample depicted 8.0"



1101-3

653 | 1101

A - 651



A - 651 - Bsize of sample depicted 6.6"



A - 651 - D



A - 651 - E

A - 651 | A - 652



A - 651 - F



A - 652 - Dsize of sample depicted 7.0"



A - 652 - E

A - 652 | A - 653



A - 652 - F



A - 652 - G



A - 653 - Gsize of sample depicted 6.5"

A - 657




A - 657 - Dsize of sample depicted 6.8"



A - 657 - E




A - 657 - G



A - 658 - Esize of sample depicted 8.5"



A - 667 - Fsize of sample depicted 6.5"



O - 551 - Bsize of sample depicted 7.0"

O - 551 | O - 552



O - 551 - D



O - 552 - Dsize of sample depicted 8.0"



O - 552 - F

O - 552 | O - 553



O - 552 - G



O - 553 - Bsize of sample depicted 8.5"



O - 553 - E

O - 553 | O - 554



O - 553 - F



O - 554 - Csize of sample depicted 8.5"



O - 554 - D



O - 554 - F

