

Esteemed Customers



DELPHI



KUMAR



MAHLE



Subros



& many more....

Plant Locations

Aurangabad – K 151, MIDC, Waluj, Aurangabad - 431 136
– M 31 & 32, MIDC, Waluj
– M 108/1, MIDC, Waluj

Pune – C 10&11, MIDC, Ranjangaon, Pune - 412 220
– F 16&17, MIDC, Ranjangaon

Rudrapur (UK) – 182, Khasra 301, Fulsunga, Dist. Rudrapur, Uttarakhand

Greater Noida (UP) – Plot # 3, Sector 41, Kasna Industrial area, Greater Noida

EcoSense Sales Office - Flat No.6, Kalash Heights, Plot No.32, Nutan Co.Op.Hsg.Soc., Nutan Colony, Aurangabad - 431 001

RYTNOW Office - T 12 & T 13, Software Technoplogy Park, MIDC, Chikalthana, Aurangaabad - 431 210



www.sanjaygroup.in
sales@sanjaygroup.in
Ph.: +91 240 2242974



EcoSense Appliances Pvt. Ltd.
www.ecosense.asia
sales@ecosense.asia
Ph.: +91 240 2333800



RYTNOW Systems Pvt. Ltd.

www.rytnow.com
sales@rytnow.com
Ph.: +91 888888 9500,

sahas infovision - 9423821157



solutions with innovations...



FOUNDATION

Strong Values

A group of professionals planted the seeds of this organization in 1997. Since then, it has been growing with diversified interests. The group has eight manufacturing plants at Aurangabad, Pune, Rudrapur and Greater Noida catering to variety of Automotive and Home Appliance customers. Employees and Customers have been the main stakeholders in this growth. The company is indebted to the Society and Mother nature for its existence & growth, and commits to return the debt by developing eco friendly products and processes.



Vision

We, at Sanjay Group, are determined to create wealth for our Company, Employees, Associates, Society & Nation through excellent demonstrations of manufacturing & business skills. We are committed to maintain our environment and make it better for future generations.

Mission

We, at Sanjay Group, are passionate for customer delight. We aim at making our company a world class manufacturing facility. We will continue to cultivate a progressive & innovative culture amongst the employees & all concerned. We will pursue continual improvement in education, knowledge, technology, safety and social responsibility.

PRODUCT RANGE





Footprint

Sanjay Group manufactures a variety of plastic products at its state -of- the art plants.

We provide components, products, and services to many automotive & other customers. We make over 1 000 different parts for various 2 & 3 wheelers and 4 Wheelers.

With over 50 injection molding machines ranging from 50 Ton to 1500 Ton capacity, we produce over 1 00,000 parts every day. We process over 50 different types of plastic raw material, and produce the parts that have high functional and aesthetic requirements.

AUTO PARTS - PLASTICS

2 & 3 Wheeler Components

Lighting components

Rear view mirror assemblies

Air filter components

Brake system parts

Switch components

Seat base

Suspension parts

Exterior body parts

4 Wheeler Components

HVAC housing and kinematic parts

Seating parts

Exterior & Interior plastic parts

Radiator fans & shrouds

Lighting parts

Clutch components

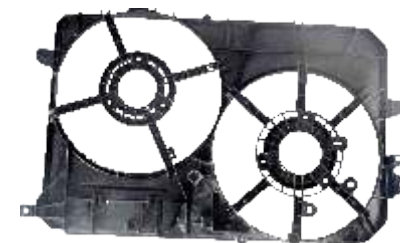
Home Appliances

TV parts

Refrigerator components

Lighting & furniture components

PRODUCT RANGE





METAL FORMING & PRODUCT SOLUTIONS

Contemporary equipment and skilled manpower

The weld shop has contemporary equipment and skilled manpower. It has TIG, MIG, Spot & Projection welding machines that can be used for variety of metal joining applications.

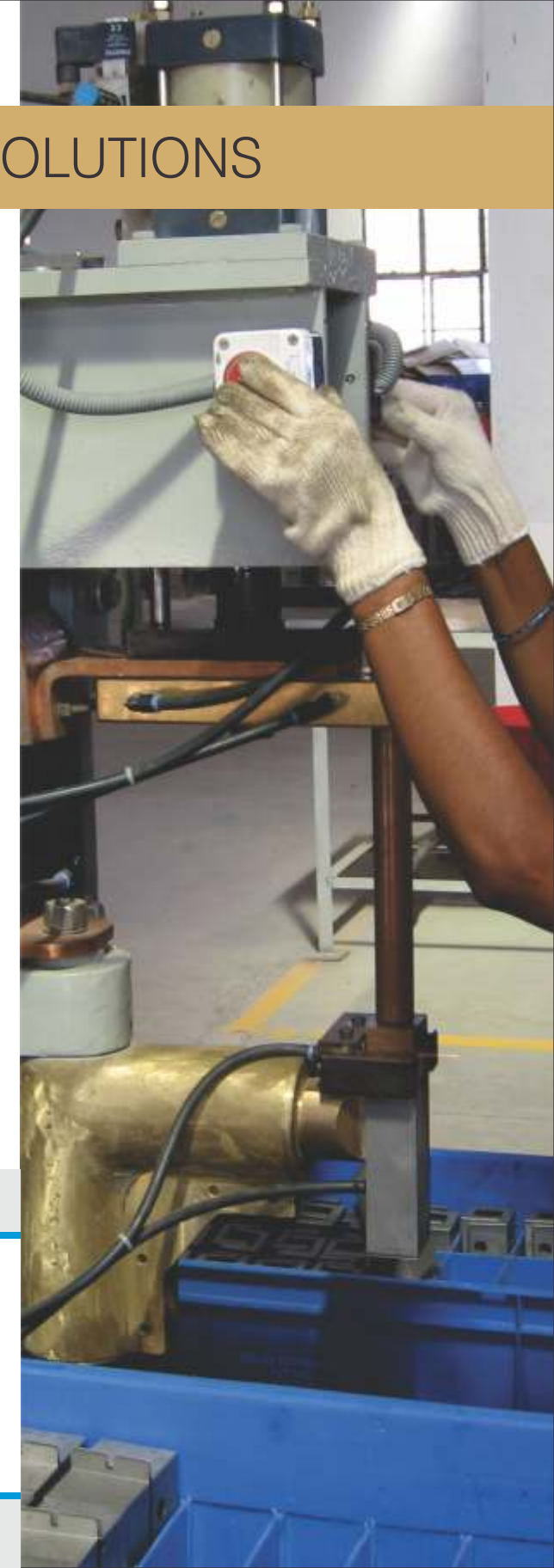


Complete Solution

The Company provides a complete solution in small sheet components and welded assemblies. We use a flexible manufacturing system to plan, develop and manufacture a wide variety of sheet metal components and assemblies. The manufacturing facility consists of high quality precision presses up to 100 Ton, press brakes, shearing machine and roll forming machines.

We also manufacture brake shoe assembly for 2/3 wheeler applications.

PRODUCT RANGE





SURFACE COATING

Every month we process

400,000	- Engine cover parts
50,000	- PU painted auto parts
20,000	- Refrigerator handles
50,000	- Clutch parts



Reliable Solution

Conveyorized paint shop at our Aurangabad facility supplies variety of motorcycle exterior parts. We specialize in decorative PU painting on the plastic parts, and decal application for styling. We also process Engine cover parts with heat resistant paint. Our facility is equipped with surface coating test equipment consistent with ASTM standards.

PRODUCT RANGE





AUTO PARTS - PRODUCTS & ASSEMBLIES

Key Values

We offer to our customer

Flexible Manufacturing System to handle multiple products

Robust Quality & Process planning

Increased operational efficiency, hence cost saving

On time delivery, 100% Ship Window Compliance

Protection of Intellectual Property & Trade Secrets

Products

We have been providing Contract Manufacturing services to key automotive customers. The services cover supply chain management, production, quality management, accounting and customer support.

The manufacturing standards followed are consistent with customer's global standards. All the business processes are tuned to customer specific requirement.



PRODUCT RANGE





We, at EcoSense appliances private limited, are committed to provide cooking energy efficient products and solutions, through continual research and association with the academics in India.

ecocooker^{pro}
saves energy | cooks better



Dal + Rice + Vegetable
at a time

150 Idlies
in 20 mins

Saves
70%
LPG*



eco chulaTM
Cook More | Save more



ECOSENSE

warming your **LIFE** cooling our **PLANET**

Efficient cooking system

An efficient cooking system has been developed in collaboration with Institute of Chemical Technology and Land Research Institute, Mumbai. This is an innovative solution that saves about 70% energy over conventional means of cooking, improves the taste, retains the aroma and the nutrients in the food.

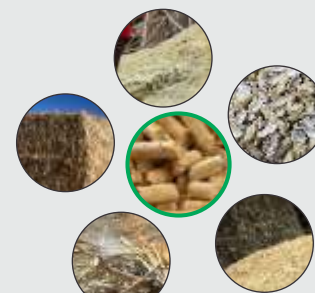
The product is an innovation in steam cooking, that will not only help cook better food, but also help save energy, efforts, and environment.

If 10% of the Indian consumers switch to EcoCooker, they can potentially save 300,000 trees every year.

Our determination for future is to develop more & more eco friendly appliances and products.

eco pellet^{PM-125} maker

Useful device in
'Cooking energy self sufficient villages' mission



Biomass Residue or
Agricultural Residue



'MOTHER
we care you'

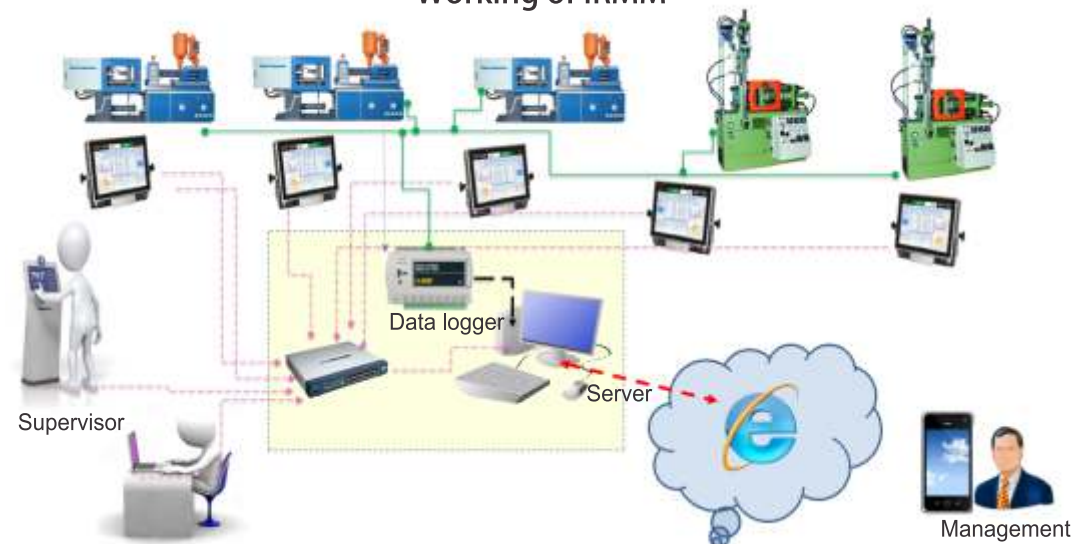




Become **SMART MANAGER** of a
SMART FACTORY!

RYTNOW presents IRMM, a patented hardware and software system connected directly with the production machines. It provides accurate, real-time production data that managers can see on their computers or mobile screens, Anytime Anywhere. IRMM also makes your factory a Smart Factory through various features for Operators, Supervisors, Quality Managers, Production Managers and the Top Management of the company.

Working of IRMM



RYTNOW

Experience the Power of Information

Real Time Production Data: Connected with production machines, IRMM provides minute-by-minute production updates directly from the machines.

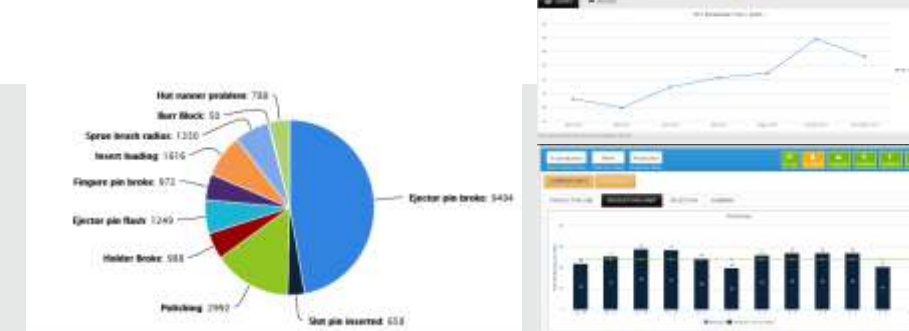
Accurate Data: As least human-intervention is needed in the functioning of IRMM, there is no scope for human errors and manipulations.

Instant Performance Reports: IRMM offers numerous reports such as OPE, OEE, PPM and many more at a button click with the most recent data.

Factory Console



Mold Break Down Details



Kindly Contact us to increase your profits, reduce delays and make your factory **SMART**

**Smart
Factory**

**100%
Accuracy**

**Real-time
Production
Data**

**No more
Paperwork**

**Instant
Reports**

**e-Docs
on
Shop-floor**

**Remote
Factory
Monitoring**