

SIGNODE MD-V Fully automatic, vertical strapping machine

Taking reliability and durability to a new dimension

Construction, operation and service

The MD-V is based around a robust, welded box section construction with the strapping head mounted securely within the machine. Packs are transported into position along a guide rail by the customer conveyor system.

The machine uses recyclable polypropylene or polyester strapping of 9, 11 or 13 mm width and various thicknesses.

Options

Special aluminium chute sizes on request
Additional dispenser
Special electrics on request
Interface controls for in-feed and out-feed conveyors
Second strap options
Automatic Strap rewind when strap coil is depleted
Special colour on request

Machine Design

The MD-V is supplied with an aluminium chute in the following sizes. The chute width varies from 650 mm to 1650 mm in increments of 200 mm. The chute height varies from 1050 mm to 1650 mm in increments of 200 mm. The total chute length may not exceed 6600 mm. Non-standard chute sizes are available to special order.

Strapping Materials

Signode Dylastic® Polypropylene		Signode Tenax® Polyester	
654 series	9 mm	1616 series	9 mm
714 series	11 mm	1716 series	11 mm
716 series	11 mm	1718 series	11 mm
718 series	11 mm	1818 series	13 mm
816 series	13 mm	1822 series	13 mm
818 series	13 mm		

Worldwide Service Back-up

As a global product, strapping materials, service and spare parts can be obtained from all Signode distributors and partners.

ITW Signode
Packaging Solutions
Equipment • Consumables • Services

ITW Signode India Limited
Industrial Packaging Systems Group

401 & 402, New Udyog Mandir, Moghul Lane, Mahim, Mumbai 400 016
Tel: 91-22-24449502, 24449022, Fax: 91-22-24449021
Email: info@itwsignode.co.in

The Company has a policy of continuous product development and reserves the right to alter specifications at any time without prior notice.

Branches:

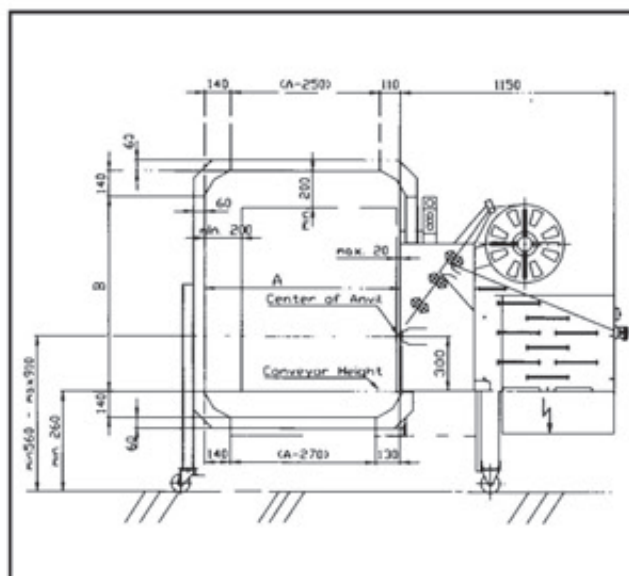
Bangalore: 2240490 / 2242304, Baroda: 2322495 / 6 / 7,
Coimbatore: 221204, Chennai: 24723863 / 24725313, Kolkata: 24618014/8020
Hyderabad: 23353785, Lucknow: 329213/324349, Ludhiana: 2451587/588,
New Delhi: 26424984/26428646, Pune: 5536306/5536276

Technical Data

Strapping Head	MD with patented new technologies
Joint method	Swing WELD - vibration seal
Strap Tension	Adjustable from 100 to 2000 Newtons with high repeat accuracy
Strap Cycle	Initiated by customer contact or photo cells
Power Supply	400 Volts, 3 phase 50Hz or 440 Volts, 3 phase 60Hz
Power Consumption	2.15 kW
Control voltage	24 volts DC
Control	Siemens S7 PLC
Max Noise level	79 dB(A)
Max Chute size	1650 x 1650 mm (width x height)
Min pack height	100 mm
Machine weight	approx 300KG, depending on specification
Machine finish	Machine panel: stainless steel, other RAL 6000 green
Chute	Aluminium
Electrical cabinet	RAL 7232 grey
Dispenser	RAL 7021 black

MD-V Operator Controlled Version

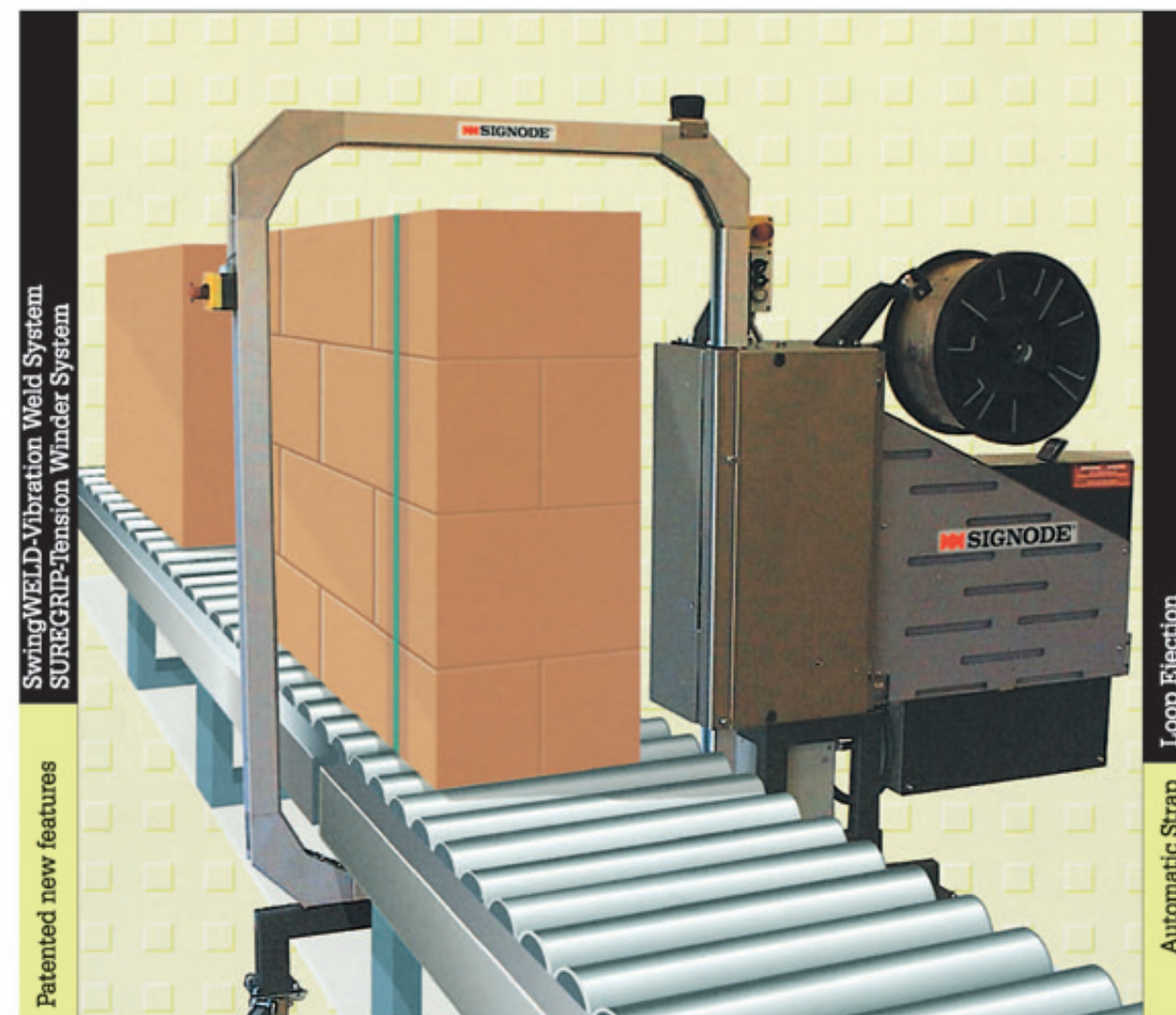
An automatic operator controlled version is also available for lower throughput applications, with the strap cycle initiated by a foot switch or start button.



SIGNODE MD-V

Fully automatic vertical strapping machine
with fully patented SwingWELD sealing technology

for 9, 11 and 13 mm Polypropylene or Polyester strap



The new standard for reliability and durability

High Strap Tension - outstanding accuracy and repeatability from 100 to 2000 Newtons.

Greater Machine Availability - automatic strap loading system and quick change coil, ensures rapid coil changeover with minimum downtime.

Strap-Tail Rewind and Ejection System - strap is automatically ejected when strap coil is empty.

Maximum Safety - fully CE safety certification, plus numerous safety features for maximum operator protection.

High System Flexibility - uses either polypropylene or polyester strap in 9, 11 and 13 mm widths.



ITW Signode
Packaging Solutions
Equipment • Consumables • Services

SIGNODE MD-V

Fully automatic vertical strapping machine

providing new levels of reliability and machine availability

The MD-V is a fully automatic strapping machine, designed to provide the optimum solution for installations where products are transported into the machine along the side of the conveyor. This arrangement eliminates the need for head travel and provides maximum reliability and packaging performance. The compact design of the MD-V enables it to be integrated easily into existing automatic packaging lines, as only minimal installation area is required for the machine.

The flexibility of using either polypropylene or Tenax® polyester strap in 9, 11, or 13 mm widths, enables the MD-V to pack everything from cartons, boxes and containers, plus timber and metal products.

MD-V also provides high levels of strap tension, which is infinitely adjustable from 100 to 2000 N with a guaranteed 3% repeat accuracy.

The MD-V uses Signode's advanced clutch free technology and multi-motor operational concept, to provide the highest level of reliability currently available in the packaging industry.



Quick-change Coil

The quick change coil dispenser allows strap coils to be changed without delay.



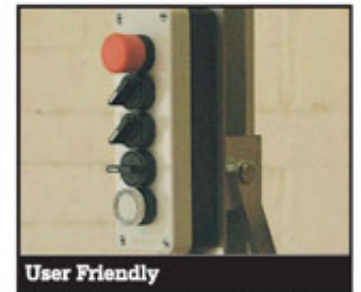
Strap Auto-feed

After changing the strap coil, operators simply insert the strap into the strap guide. The strap accumulator and chute are automatically reloaded to ensure a rapid changeover.



PLC Control for total flexibility

For optimum performance, high speed and reliability, the MD-V has PLC control. Siemens S7-200 is installed.



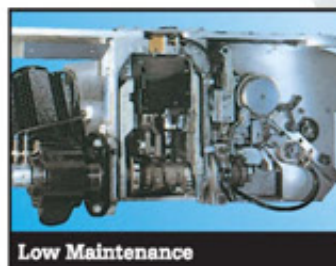
User Friendly

A series of clearly identified backlit push buttons and user symbols guide the operator through the strap coil changeover and strap loading procedures.



Precise Strap Positioning

The aluminium chute system ensures that strap is accurately positioned on the pack.

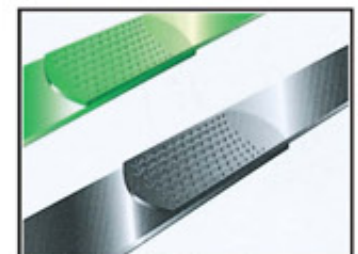


Low Maintenance

The MD strapping head is designed for long operational life and requires virtually no maintenance and also features an exchangeable welding module for easier servicing. All key parts of the head are easily accessible.

Strap Tail Auto-Eject

At the end of each strap coil, the strap is automatically ejected from the chute and can be quickly removed by the operator. New coils can be rapidly loaded to ensure maximum machine availability.



High strap joint strength

This innovative, patented Swing WELD-system guarantees a high joint strength and ensures pre-selected strap tension can be repeated with an accuracy of +/- 3% to ensure consistent pack presentation.