

TOP GEAR
TRANSMISSIONS

www.topgeartransmission.com



INTRODUCTION

Top Gear is headquartered at Satara (Near Mumbai, India) engaged in the field of design & manufacturing of planetary gear boxes as well as custom built gear boxes for various applications.

We have created a different identity on the global platform with quality centric & innovative products. We also have an international Quality Management Standard ISO 9001. With the team of professionals, advanced design software's and state of art manufacturing and testing facilities, we are trying to deliver our best services and niche products to our customers.

Top Gear has got distinct business growth rate and become a market leader in the transmission sector in India. Constant technological changes and continual R & D efforts and experiments of new materials has created space for distinct application areas.

Top Gear has it's specialty to develop custom built gear boxes and also special application gearboxes. The commitment of every individual in the organization for continual improvement and ultimate goal of customer satisfaction has rewarded Top Gear in India and abroad by number of satisfied customers.

MISSION & VISION

Top Gear vision is to fulfill the demands of the Indian & international industries needs of power transmission.

Its mission is to provide a one stop solution with reasonable prices, ensuring efficient & energy saving solutions over existing drive systems. Thus, becoming the most reliable name in the market of power transmission.

To generate a business module which will offer opportunities to other people to grow ensuring satisfaction of a manufacturing chain which covers employees-suppliers-customers-society.

To recruit & retain a dedicated team of persons, to improve the talents by training programs and workshops keep the Top Gear on leading edge. The strength of Top Gear lies with our dedicated work force.

We focus to establish Top Gear's brand name world wide making everyone proud to be associated with the company.



QUALITY POLICY

It is a well established quality policy of Top Gear to provide its products and services which comply with the customers with agreed specifications.

We ensure that all employees are trained and developed to understand implement and maintain the quality objectives detailed in the Top Gear Quality Assurance Management System and in the achievement of the organizational goals and objectives.

Top Gear is totally committed to the quality assurance management system and it is the responsibility of every individual in the organization to ensure that the task or the operation he or she performs fully meets with the specified requirements before it is passed on to the next stage of business cycle.

OUR ACHIEVEMENTS

- World-class manufacturing practices and quality
- Cost effective solutions for varied applications
- Manufacturing capacity of 2000 products per month
- ISO 9001 certified & crisl SE2B rating company
- Indian successful manufacturer to supply centrifuge gear boxes
- Indian manufacturer to supply off shore crane gearboxes
- Manufacturing of 1000 HP planetary drive
- Introduced & implemented range of power saving drives to sugar industry for various applications
- Introduced steel rolling machinery gear boxes
- Received recognition by various National Awards for Technology, Productivity & Quality

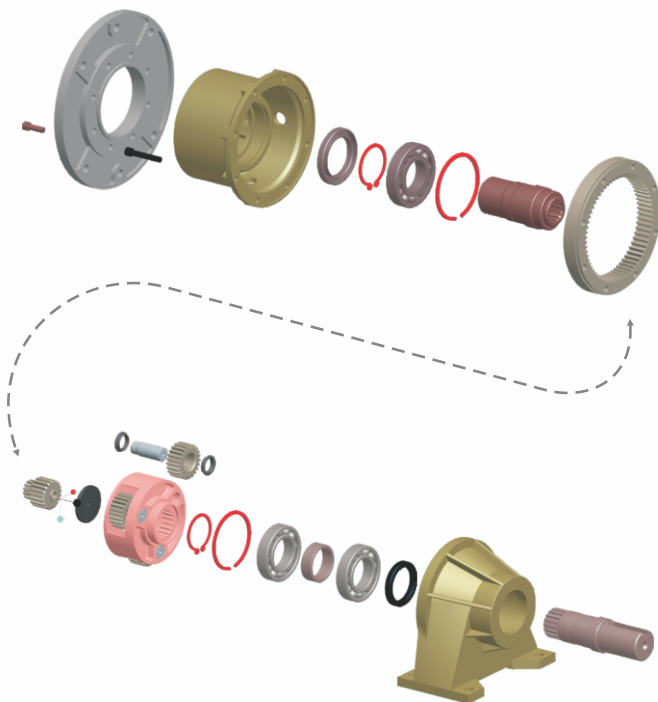
CONSTRUCTION

Planetary gear box has got a modular construction and it's every single stage consists of one internal gear meshing with three to five planet gears mounted on the planet carrier. These also mesh with the sun gear maintaining the same direction of rotation. The planet carrier is connected to the output shaft of the gear unit. The design feature employed with the sun gear floating amongst the planet gears together with accurate machining of parts, grants uniform load distribution among the planet gears.

The material used is low carbon nickel chrome and molybdenum alloy steel for gears and high carbon steel for shafts. Casings are made up of graded cast iron or cast steel necessary to withstand the load on the output shaft. Planet gears run on needle bearings while deep groove ball bearings or roller bearings are used on drive shafts.

The gearboxes are either foot mounted or flange mounted. The drive can be given by pulley/sprocket or coupling with the help of a solid shaft. Female shaft and flange type are also available to mount the direct electric motor of flange mounted construction as per IEC standards.

The gear boxes can be offered either bevel or worm planetary combination to have a right angled transmissions wherever orientation and application demands for.



DESIGN PHILOSOPHY

With more than two decades of excellence & customer focused, application oriented design needs with computer aided tools which ensures the state of the art product.

Top Gear's R & D department puts their conceptual ideas to 2D & 3D with the help of latest methods ensures design feasibility & finally again the validation is done with simulation on actual loading conditions .

Continual improvement with service feedback helps to upgrade design in all aspects. It helps us to offer a reliable & efficient product to our most prestigious customers to stay ahead in the competition.

PLANETARY GEARED MOTORS



- Available in foot & flange type mounting
- Shaft solid, splined, hollow as well as shrink disc type
- Built with squirrel cage induction motor of IEC standard
- Out put speed 0.1 RPM to 400 RPM
- Power 0.17 Kw to 30 Kw
- Torque capacity up to 1,50,000 Nm

BEVEL PLANETARY DRIVES



- Right angle in construction
- Hollow as well as solid output
- Compact in size
- Ratio available from 8 to 100000
- Power 0.17 Kw to 50 Kw
- Torque capacity up to 1000000 Nm

WORM PLANETARY DRIVE



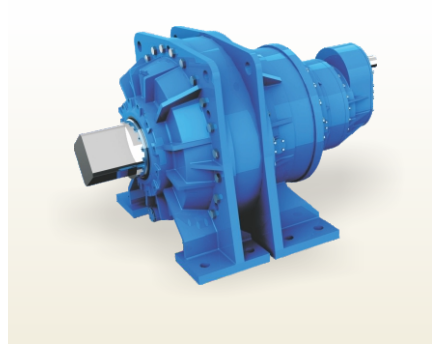
- Ninety degree transmission
- Space saving and 4 position orientation
- Silent in operation & irreversible
- Higher reduction ratios 36 to 1,00,000
- Torque capacity 300 Nm to 5,00,000 Nm
- Foot or flange type mounting are available

HEAVY PLANETARY DRIVES



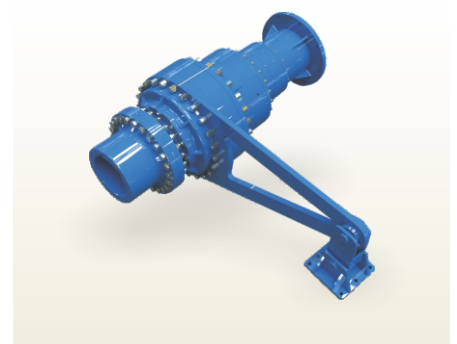
- Rigid in construction
- Versatile mounting arrangement
- High overhang load capacity
- Compact in size
- Ratio available from 3.6 to 100000
- Power 50 Kw to 150 Kw
- Torque capacity up to 750000 Nm

SUGAR MILL DRIVE



- Rigid foot mounting construction
- Output square end shaft
- Roller bearings
- Ratio available from 150 to 480
- Power 50 Kw to 1000 Kw
- Torque up to 4500000 Nm
- Available with forced lubrication system

SHAFT MOUNTED MILL DRIVE



- Shaft mounted with rigid coupling & torque arm
- Directly mounted on shaft
- Input drive can be electric or hydraulic
- Ratio available from 150 to 480
- Power 40 Kw to 250 Kw
- Torque up to 1500000 Nm
- Available with forced lubrication system

SPUR-PLANETARY DRIVES



- Used for sugar industry crystalliser
- Shaft mounted in construction, no need of foundation & coupling
- Highest reliability
- Higher efficiency
- Compact in size
- Ratio available from 50 to 50000
- Power 1 Kw to 50 Kw
- Torque capacity up to 350000 Nm

SHAFT MOUNTED GEAR BOX



- Direct mounting on shaft no foundation required
- Input can be given by belt drive
- Ratio available 5/13/20
- Power capacity up to 75 Kw
- Hardened & ground helical drive transmission

SHAFT MOUNTED PLANETARY



- Shaft mounted with shrink disk & torque arm
- No need of foundation & couplings
- Highest reliability
- Ratios available from 3.6 to 100000
- Power 2.2 Kw to 37.5 Kw
- Torque capacity up to 150000 Nm

TRACK DRIVES



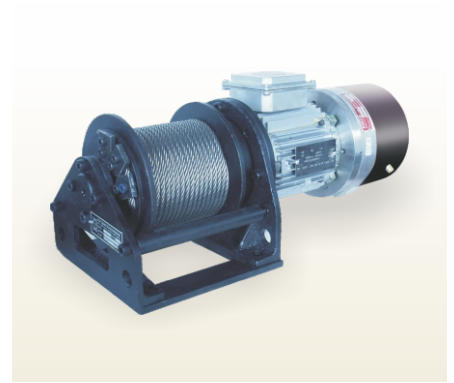
- Used for crawler applications in earth moving machines
- Rigid in constructions
- Inbuilt hydraulic parking brakes
- High radial load capacity due to taper roller bearings
- Compact in size
- Ratios available from 3.6 to 100
- Torque capacity up to 80000 Nm
- Radial load capacity up to 100000 N

HYDRAULIC WINCH DRIVES



- Used in mobile cranes, Drilling rings, Material handling trolleys
- Hydraulic input
- Inbuilt brakes available
- Highest reliability
- Compact in size
- Line pull capacity 2,500 N to 5,00,000 N
- Line speed 10 mtr/min to 60 mtr/min

ELECTRIC WINCH DRIVE



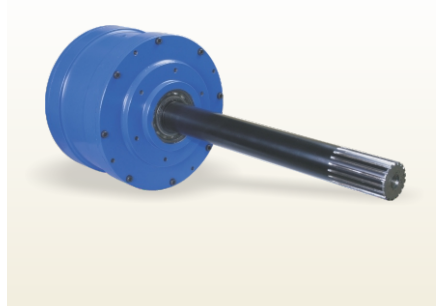
- Use in pick and carry cranes, material handling
- Available with electric brake motor
- Capacity up to 100 MT
- Available in foot mounting
- Power 0.17 Kw to 370 Kw
- Line speed 0.1 mtr/min to 30 mtr/min
- Compact in size

BELT DRIVE



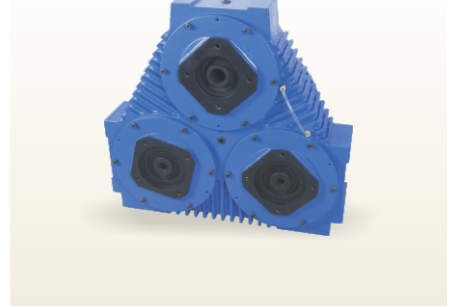
- Used in belt conveyor
- In built with planetary gearbox
- B5, IEC standard motor fitted externally
- Drum dia 130 mm to 750 mm
- Belt speed available 1 Mpm to 100 Mpm
- Bearing plumber block can be eliminate

CENTRIFUGE DRIVES



- Used in decanter applications
- Body rotates at high speed
- Various reduction ratios & series available
- Power rating up to 150 Kw
- Dynamically balanced components & assembly

PTO DRIVES / PUMP DRIVES



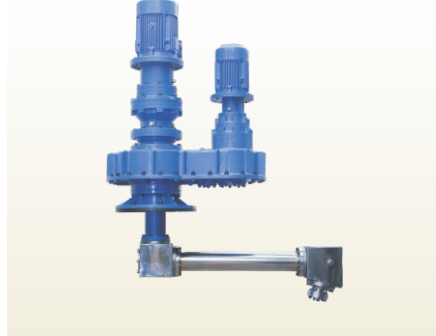
- Used for mounting no. of hydraulic pumps with single prime mover
- Cast housings
- Arrangement to mount on flywheel end
- Speed increase as well as reduction
- Available 2/3/4 pump designs
- Power 50 Kw to 370 Kw

CRANE DUTY GEAR BOX



- Used for crane applications like CT, LT, and HT
- Available in solid input and output
- Split type housing with M.S. fabricated
- Antifriction ball or roller bearings used
- Ratio available from 8.5 to 200
- Power 1.5 Kw to 300 Kw
- Torque up to 100000 Nm

CONICAL MIXER DRIVE



- Used in chemical industry for cone mixture
- Complete drive system
- Available in stainless steel construction
- Highest reliability
- Arm rotation at 0.7 to 1.2 RPM
- Power 2.2 Kw to 18.3 Kw

CREEP DRIVE



- Crane applications for creep speed
- Rigid in construction
- Planetary gear inside
- Suitable design as per thruster brakes
- Ratio available 3 to 10
- Power 1 Kw to 20 Kw
- Drum dia. 130 mm to 400 mm



Perform up for the global market !



W-41, Additional M.I.D.C., Satara - 415 004. Maharashtra (INDIA) Tel.: + 91 - 2162 - 240 493, 240 642 Fax : +91 - 2162 - 240 373
Email : sales@topgeartransmission.com | topgeartransmissions@yahoo.co.in | website : topgeartransmission.com

SALE OUTLETS :

Delhi • Ahmedabad • Baroda • Mumbai • Pune • Chennai • Vizag • Jamshedpur • Kolkata