

Ø 6 to Ø 40 mm

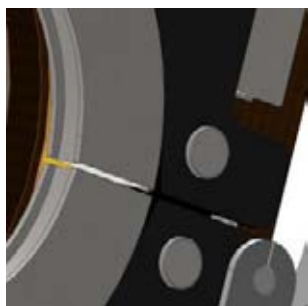


AXXAIR

Technical characteristics:

- **Water-cooled head**
- **Dual-wing opening**
- **Clamping jaws - stainless steel** (1 kit per diameter)
- **Rod specific to diameter**
- **Motor with coder: allows for rod start-up at all angles**
- **High protection against start-up without rod**
- **Weight: 8.8 kg**

ADVANTAGES



Tool-free jaw fitting



Axial spring-loaded system: to account for tube "out of round"



Driven by AXXAIR SASL-200T power source



Adjustable spring-loaded system: to account for tube "out of round"

Accessories	References	Consumables	Options
SAFS-210 Wire harness extension 10 M	SATF-40ND	SCE16-XX Ø 1.6 mm	SSED-16: offset rod support Ø 1.6 mm offset range 4 to 7.5 mm
SMN40-XX Clamping jaws Ø in mm		SCE24-XX Ø 2.4 mm	SSED-24: offset rod support Ø 1.6 mm offset range 4 to 7.5 mm

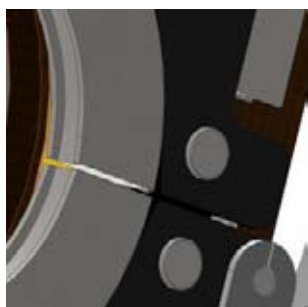
Ø 6 to Ø 65 mm



Technical characteristics:

- Water-cooled head
- Dual-wing opening
- Clamping jaws - stainless steel (1 kit per diameter)
- Rod specific to diameter
- Motor with coder: allows for rod start-up at all angles
- High protection against start-up without rod
- Weight: 9.2 kg

ADVANTAGES



Tool-free jaw fitting



Axial spring-loaded system: to account for tube "out of round"



Driven by AXXAIR SASL-200T power source



Adjustable spring-loaded system: to account for tube "out of round"

Accessories	References	Consumables	Options
SAFS-210 Wire harness extension 10 M	SATF-65ND	SCE16-XX Ø 1.6 mm	SSED-16: offset rod support Ø 1.6 mm offset range 4 to 7.5 mm
SMN65-XX Clamping jaws Ø in mm		SCE24-XX Ø 2.4 mm	SSED-24: offset rod support Ø 1.6 mm offset range 4 to 7.5 mm

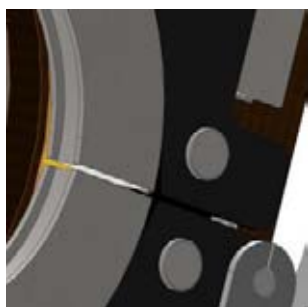
Ø 25 to Ø 115 mm



Technical characteristics:

- Water-cooled head
- Dual-wing opening
- Clamping jaws - stainless steel (1 kit per diameter)
- Rod specific to diameter
- Motor with coder: allows for rod start-up at all angles
- High protection against start-up without rod
- Weight: 9.9 kg

ADVANTAGES



Tool-free jaw fitting



Axial spring-loaded system: to account for tube "out of round"



Driven by AXXAIR SASL-200T power source



Adjustable spring-loaded system: to account for tube "out of round"

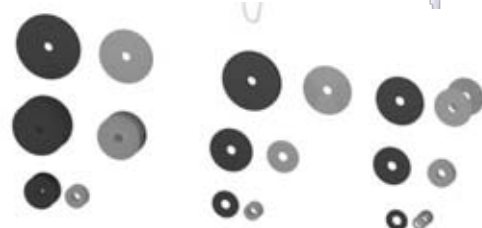
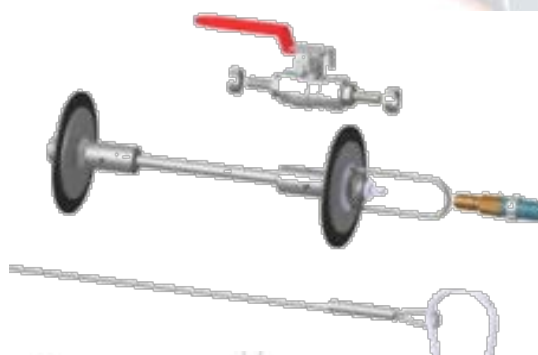
Accessories	References	Consumables	Options
SAFS-210 Wire harness extension 10 M	SATF-115ND	SCE16-XX Ø 1.6 mm	SSED-16: offset rod support Ø 1.6 mm offset range 4 to 7.5 mm
SMN115-XX Clamping jaws Ø in mm		SCE24-XX Ø 2.4 mm	SSED-24: offset rod support Ø 1.6 mm offset range 4 to 7.5 mm



SSED



SMN40-XX
SMN65-XX
SMN115-XX



SKIF-01

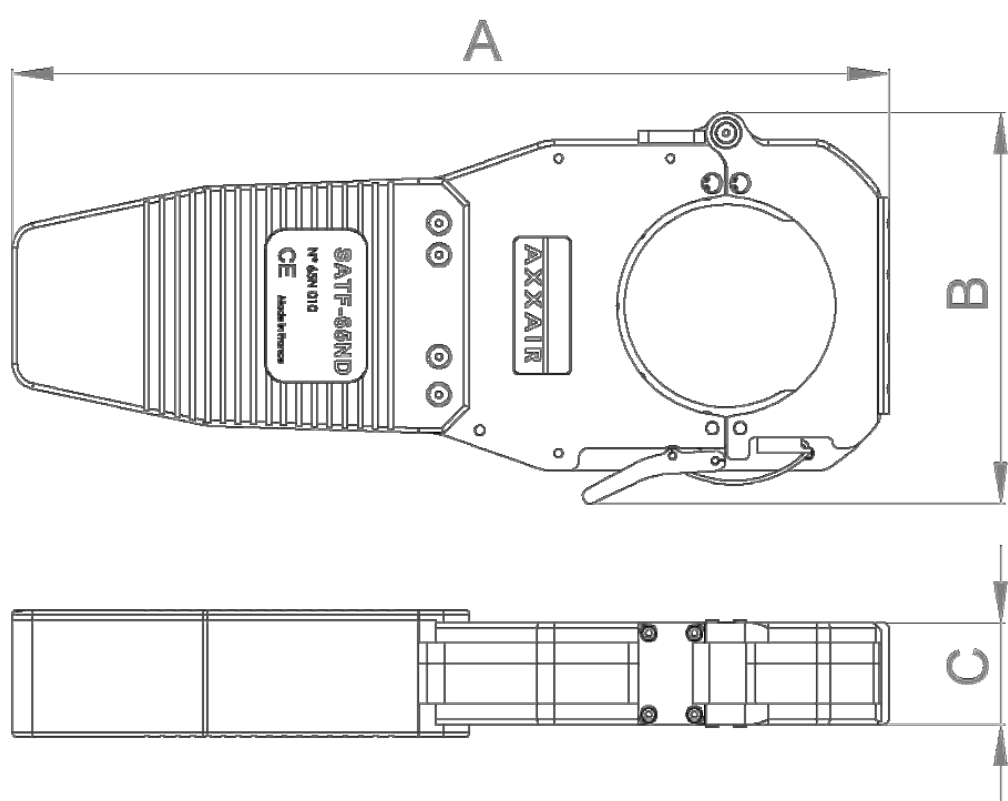




SKIB-01



Accessories	Consumables	Options
SKIB-01: gas protection kit - plugs Ø 6 to 41 mm	SMN 40-XX: clamping jaws SATF-40ND Ø in mm	SSED-16: offset rod support Ø 1.6 mm offset range 4 to 7.5 mm
SKIF-01: gas protection kit - membranes Ø 40 to 120 mm	SMN 65-XX: clamping jaws SATF-65ND Ø in mm	SSED-24: offset rod support Ø 1.6 mm offset range 4 to 7.5 mm
SAFS-210: wire harness extension 10 m	SMN 115-XX: clamping jaws SATF-65ND Ø in mm	

IN-LINE WELDING RANGE SATF DIMENSIONS



	A mm	B mm	C mm	Ø min	Ø max		
SATF-40ND	316	124	40	6 mm	40 mm	8,8 kg	< 70 dB
SATF-65ND	346	154	40	6 mm	65 mm	9,2 kg	< 70 dB
SATF-115ND	401	218	40	25 mm	115 mm	9,9 kg	< 70 dB

Ø 10 to Ø 80 mm



AXXAIR

Technical characteristics:

- **Air-cooled head**
- **Symmetrical pull-latch fastener clamping**
- **Motor with coder: allows for rod start-up at all angles and a large range of diameters**
- **Axial rod adjustment**
- **Weight: 3 Kg (without harness)**

ADVANTAGES



Torch angle adjustment: welding under flange or short T angle



Quick diameter adjustment: symmetrical encircling clamping



Driven by AXXAIR SASL-200TRA power source

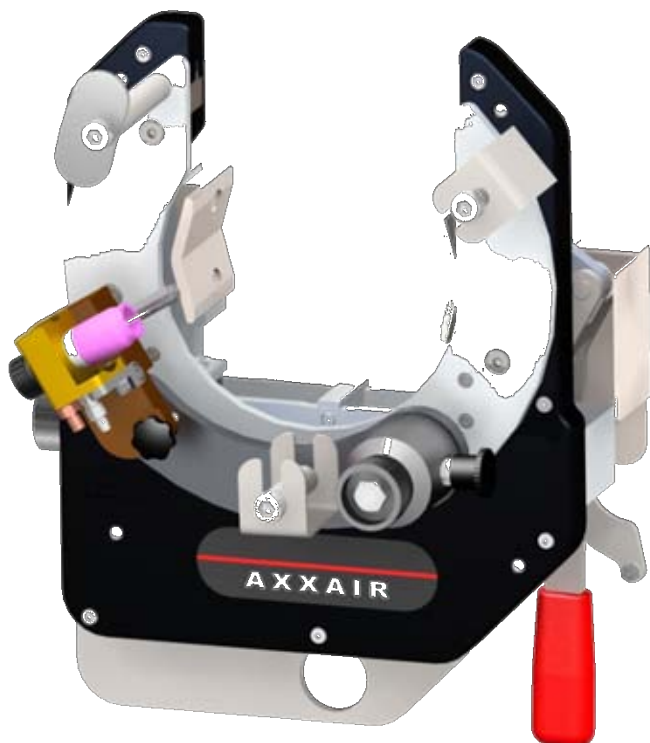


Mechanical profile guide: constant arc voltage

Accessories	References	Consumables
SKIB-01: gas protection kit - plugs Ø 6 to 41 mm	SATO-80M	SCE16-50
SKIF-01: gas protection kit - membranes Ø 40 to 120 mm		SCE24-50

Ø 12 to Ø 115 mm

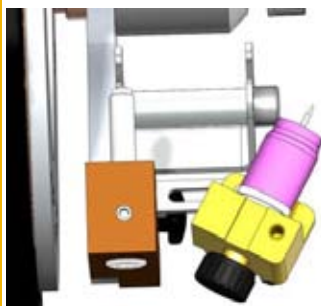
AXXAIR



Technical characteristics:

- Water-cooled head
- 200 A, 100%
- Clamping jaws - stainless steel
- Motor with coder: allows for rod start-up at all angles and a wide range of diameters
- Axial adjusting screw
- Weight: 7.5 kg

ADVANTAGES



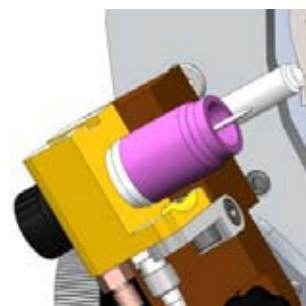
Torch angle adjustment: welding under flange or short T angle



Quick diameter adjustment: powerful symmetrical clamping



Driven by AXXAIR SASL-200T and higher power source



Mechanical profile guide: constant arc voltage

Accessories	References	Consumables	Options
SAFS-210 Wire harness extension 10 M Except with AVC/OSC/WIRE	SATO-115NDA	SCE16-50	SADFP-01: wire feeder
SKIB-01: gas protection kit - plugs Ø 6 to 41 mm		SCE24-50	
SKIF-01: gas protection kit - membranes Ø 40 to 120 mm			

Ø 25 to Ø 170 mm



Technical characteristics:

- Water-cooled head
- 200 A, 100%
- Clamping jaws - stainless steel
- Motor with coder: allows for rod start-up at all angles and a wide range of diameters
- Axial adjusting screw
- Weight: 9 kg

ADVANTAGES



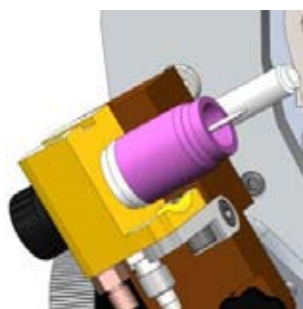
Torch angle adjustment: welding under flange or short T angle



Quick diameter adjustment: powerful symmetrical clamping



Driven by AXXAIR SASL-200T and higher power source



Mechanical profile guide: constant arc voltage

Accessories	References	Consumables	Options
SAFS-210 Wire harness extension 10 M Except with AVC/OSC/WIRE	SATO-170NDA	SCE16-50	SADFP-01: wire feeder
SKIB-01: gas protection kit - plugs Ø 6 to 41 mm		SCE24-50	
SKIF-01: gas protection kit - membranes Ø 40 to 120 mm			

Ø 38 to Ø 220 mm

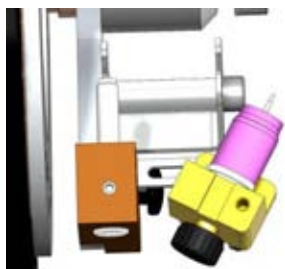


AXXAIR

Technical characteristics:

- Water-cooled head
- 200 A, 100%
- Clamping jaws - stainless steel
- Motor with coder: allows for rod start-up at all angles and a wide range of diameters
- Axial adjusting screw
- Weight: 14 kg

ADVANTAGES



Torch angle adjustment:
welding under flange or
short T angle



Quick diameter
adjustment: powerful
symmetrical clamping



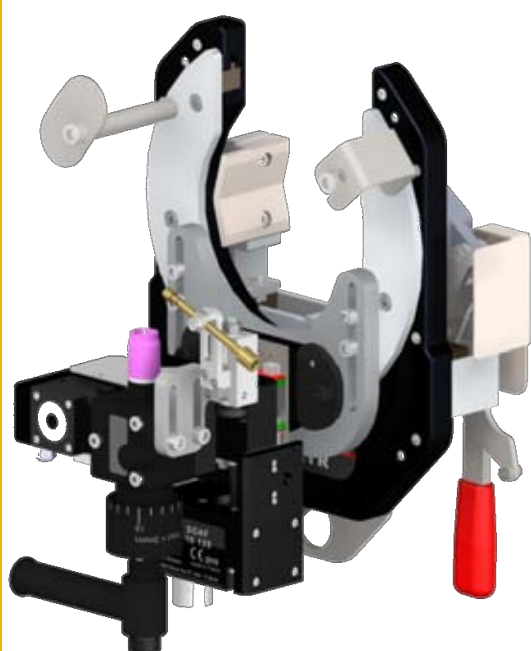
Driven by AXXAIR SASL-
200 TRA power source



Mechanical profile guide:
constant arc voltage

Accessories	References	Consumables	Options
SAFS-210 Wire harness extension 10 M Except with AVC/OSC/WIRE	SATO-220M	SCE16-50	SADFP-01: wire feeder
SKIF-01: gas protection kit - membranes Ø 40 to 120 mm		SCE24-50	

IN-LINE WELDING RANGE SATOXXNAO



SATO-115NAOA



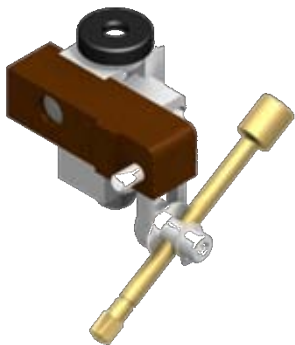
SATO-220MAO



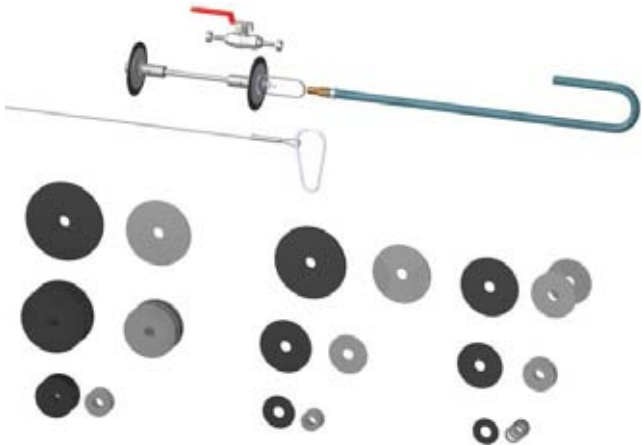
SATO-170NAOA

Description	References	Consumables
SATO-115NAOA: open head with AVC/OSC/WIRE for SASL-200 TOAF	SATO-115NAOA	SCE16-50
SATO-170NAOA:: open head with AVC/OSC/WIRE for SASL-200 TOAF	SATO-170NAOA	SCE24-50
SATO-220MAO: open head with AVC/OSC/WIRE for SASL-200 TOAF	SATO-220MAO	

IN-LINE WELDING RANGE ACCESSORIES



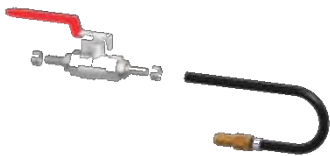
SADFP-01



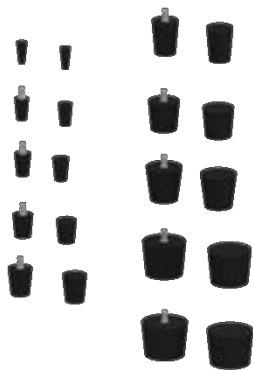
SKIF-01



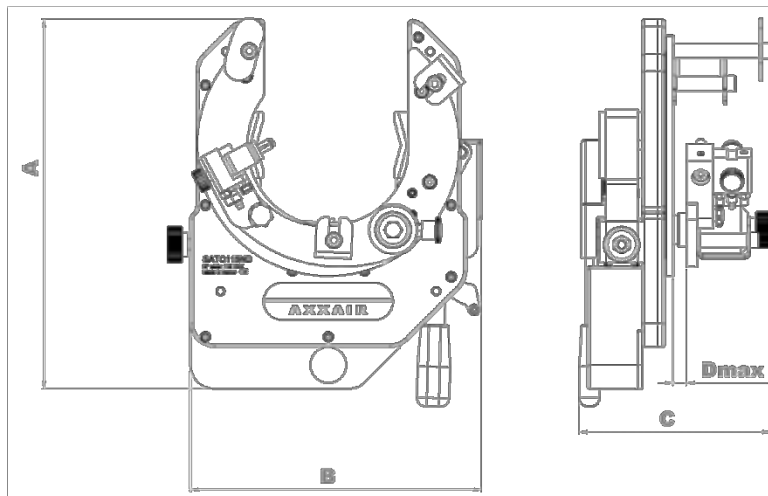
SADF2





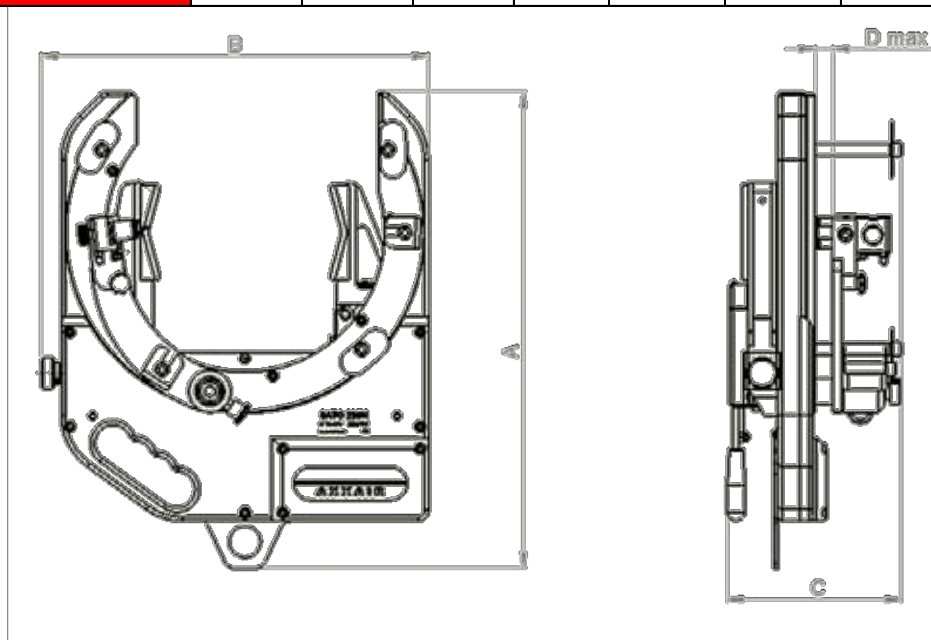
SKIB-01





Accessories	Accessories
SADF-2: wire feeder for SC and SATO (without wire spool)	SADFP-01: wire guide for open heads
SKIB-01: gas protection kit - plugs Ø 6 to 41 mm	
SKIF-01: gas protection kit - membranes Ø 40 to 120 mm	

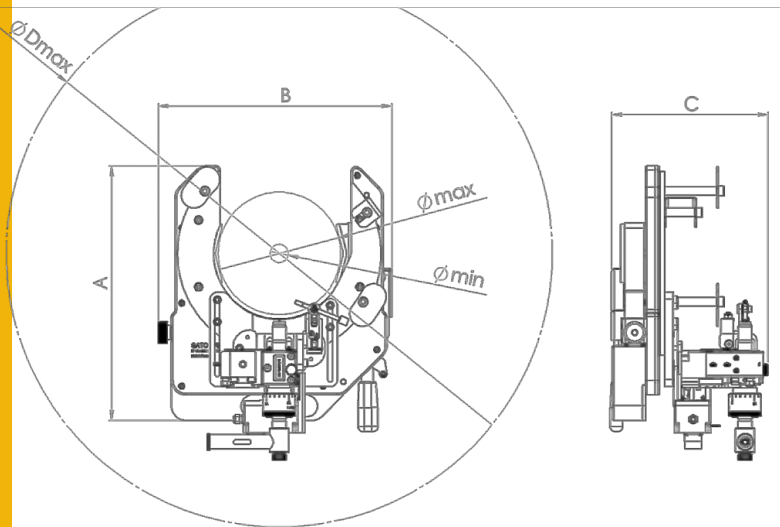


	A mm	B mm	C mm	D mm	Ø min	Ø max		
SATO - 115NDA	309	262	160	10	19 mm	115 mm	7,5 kg	<70dB
SATO - 170NDA	349	321	160	10	25 mm	170 mm	9 kg	<70dB





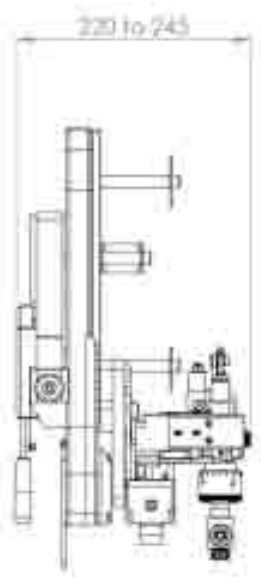
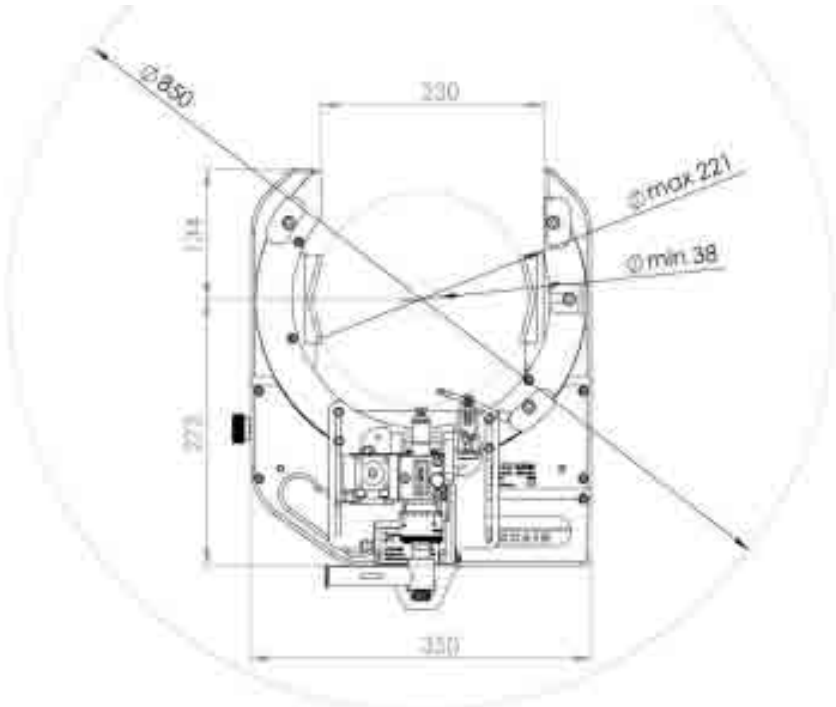
	A mm	B mm	C mm	D mm	Ø min	Ø max		
SATO - 220M	454	369	166	17	38 mm	220 mm	12 kg	<70dB

IN-LINE WELDING R/SATO NAO DIMENSIONS



AXXAIR

	A mm	B mm	C mm	Ø D max	Ø min	Ø max		
SATO - 115NAO	309	262	194↔219	680 mm	19 mm	115 mm	8.8 kg	<70dB
SATO - 170NAO	349	321	194↔219	750 mm	25 mm	170 mm	10 kg	<70dB



		
SATO-220MAO	15 kg	<70dB